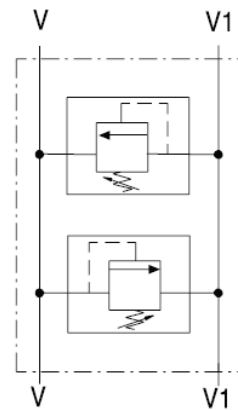
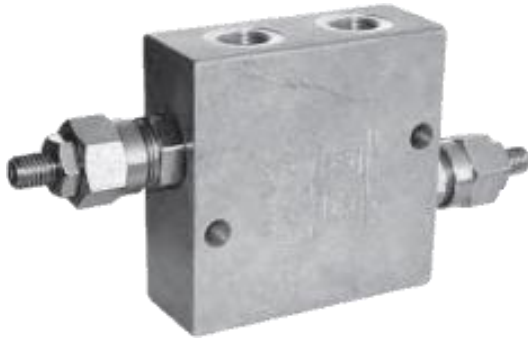


Additional Data/Spec Sheet

VBDC 35 Series MTC - Dual Cross Relief Valve – Line Type – Aluminium Body – BSP Threaded Ports
Max Flow Rate 35Lpm - Max Flow Rate 350Bar – Socket Skrew Adjustment – Spring 40-210Bar

VBDC 35**DUAL CROSS RELIEF VALVE
LINE TYPE****APPLICATION**

They are composed of two double acting relief valves and are used to limit the pressure on both lines.

INSTALLATION

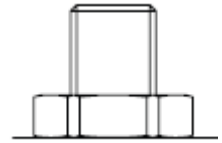
Connect one actuator and one inlet pressure flow to ports V and one actuator and one inlet pressure flow to ports V1.

OPERATION

Pressure to port V connects the actuator while the excess pressure is released to port V1. Valve A is used to adjust the max pressure on ports V. The same applies for ports V1 (valve B). Pressure adjustment is sensitive to possible counter pressures on the tank line. Adjustment operation must be carried out within the spring setting range only.

Dimensione/Dimension		02/03
Molla / Spring		B
Portata max/Max Flow rate	l/min	35
Taratura max/Max Setting	bar	210
Pressione max alluminio/Max Pressure aluminium	bar	350

Adjustment 1



EXTERNAL DIMENSIONS AND WEIGHTS

Dimension	A	B	C	D	E	F GAS	G	H	I	Weight kg 35
02	218	90	74	20	40	3/8	90	35	9	0.8
03	218	90	74	20	40	1/2	90	35	9	0.8

