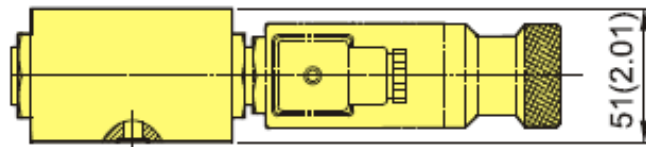
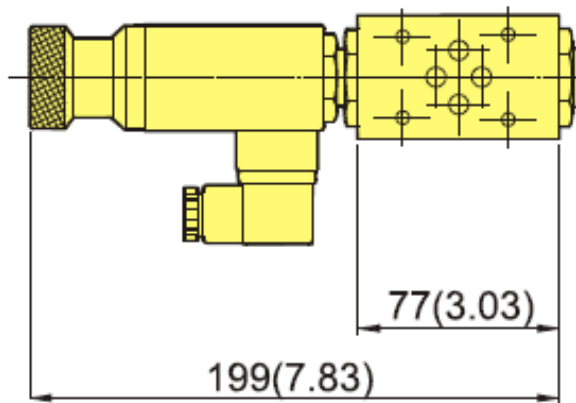


Additional Date/Spec Sheet

DNM Series NG6 Pressure Switch – Sandwich Type – Hand Knob Adjustable

Dimension Drawing:



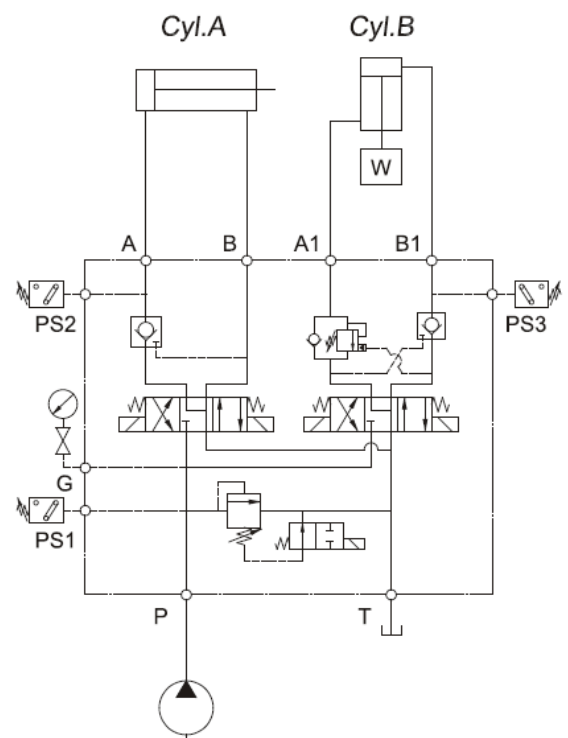
Characteristics

- Mounting position-unlimited.
- Material-body casting-iron,element steel.
- Construction-position type,spring loaded.
- No. drain line.
- Long service life.
- Recommended max. operations 20 per minute.
- Compact and robust with direct pres. read-out.

HYSTAR HYDRAULIC Means:

- Improved design and quality.
- Compact structure with.
Carefully picked material.
- Attractive.

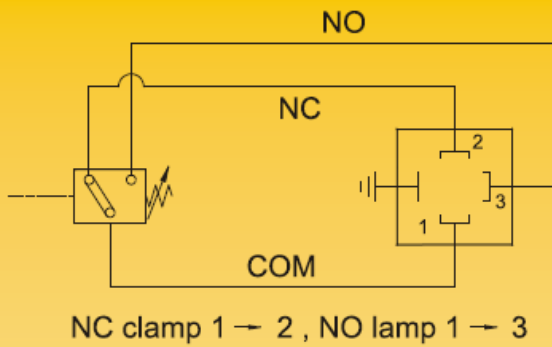
Pressure Switches



Pressure Adj. Range

Model	Pres Adj. Range bar	Surge Pres. bar
040K	6~ 40	200
100K	15~100	350
250K	40~250	350

Graphic Symbol



Pressure range

Model	040K	050K	070K	100K	150K	200K	250K	280K	360K	400K
DNM(B)	■			■			■			

