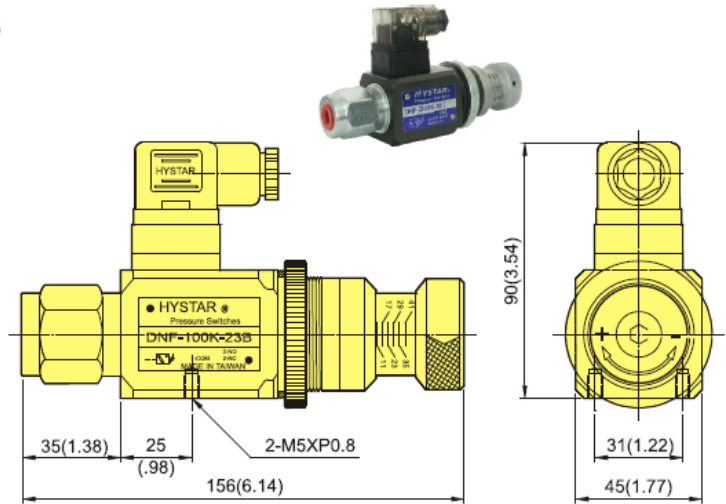
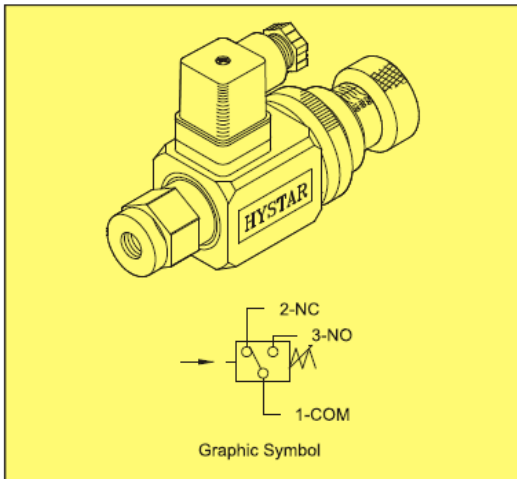


Additional Date/Spec Sheet

DNF Series Pressure Switch – Direct Read-out, Panel Mounting Type – Hand Knob Adjustable

Dimension Drawing:

DNF Series Pressure Switches



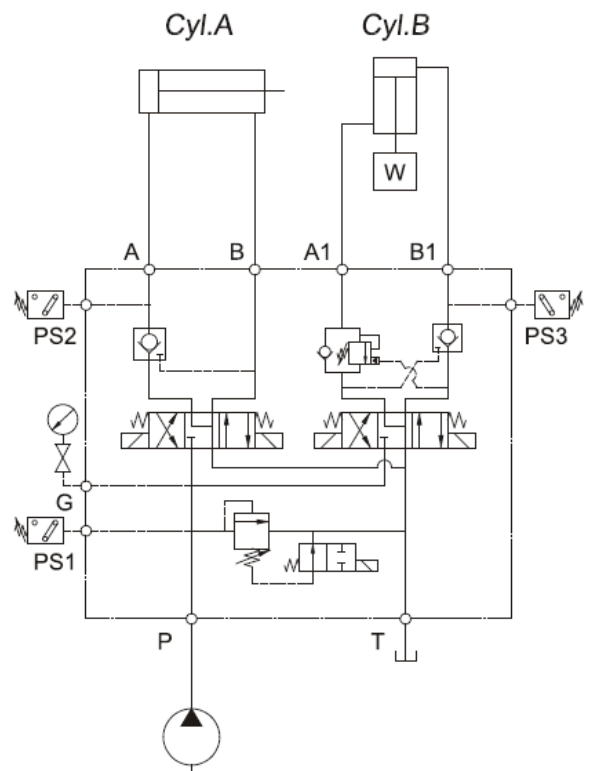
Characteristics

- Mounting position-unlimited.
- Material-body casting-iron,element steel.
- Construction-position type,spring loaded.
- No. drain line.
- Long service life.
- Recommended max. operations 20 per minute.
- Compact and robust with direct pres. read-out.

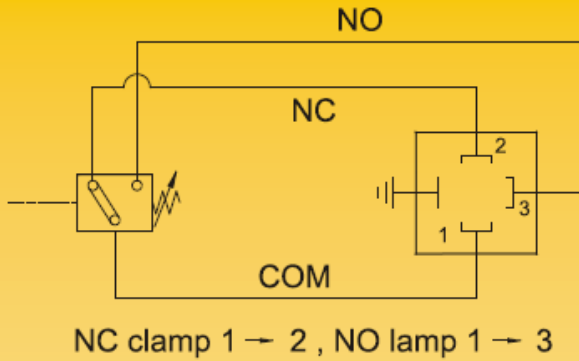
HYSTAR HYDRAULIC Means:

- Improved design and quality.
- Compact structure with.
Carefully picked material.
- Attractive.

Pressure Switches



Graphic Symbol

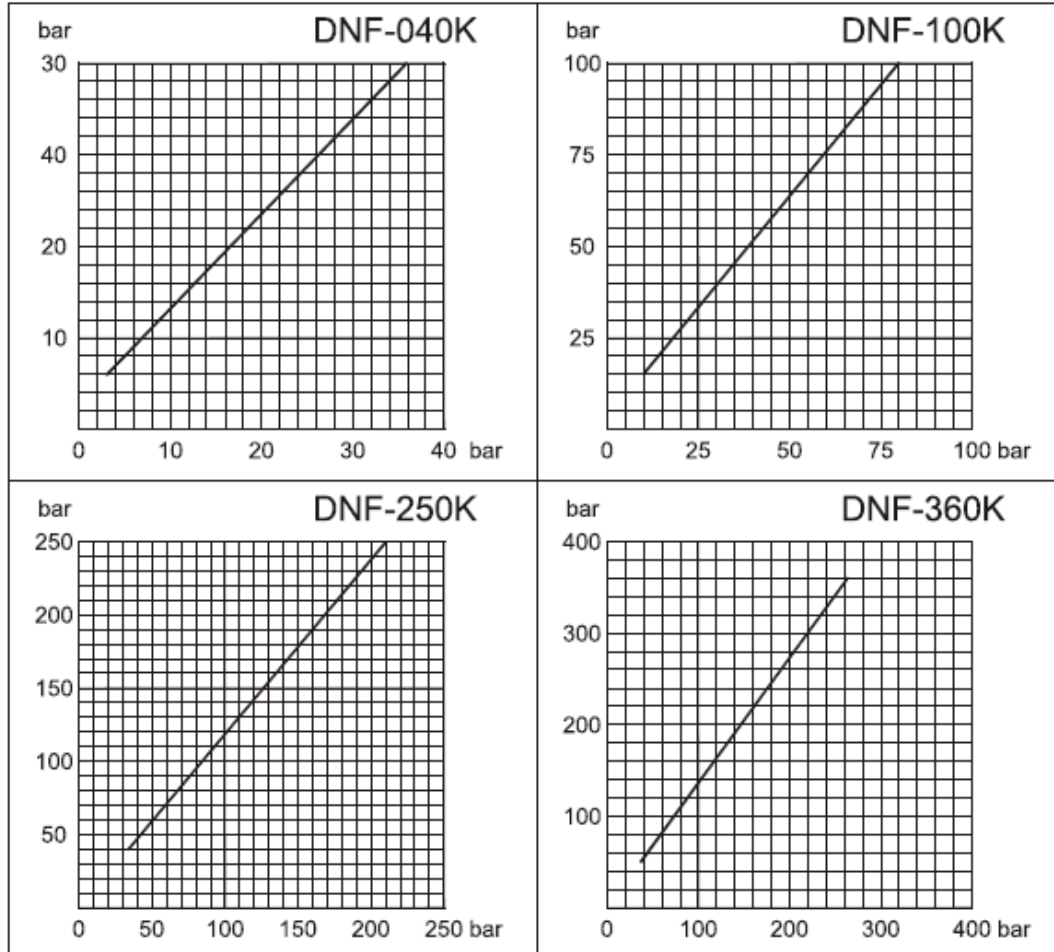


Model	Pres Adj. Range bar	Surge Pres. bar	Weight kg
040K	6~ 40	200	1.2
100K	15~100	350	1.2
250K	40~250	350	1.2
360K	50~360	400	1.2

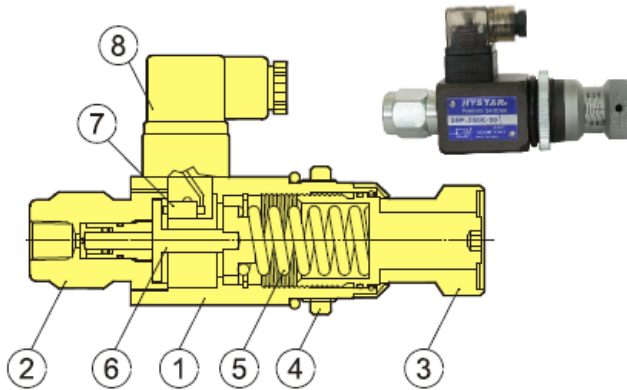
Pressure range

Model	040K	050K	070K	100K	150K	200K	250K	280K	360K	400K
DNF	■			■			■		■	

Hysteresis Diagrammes



Schematic Cross-Section



No.	Description
1	Body(Casting-Iron)
2	Connection Port 1/4"PT(Rc)
3	Pressure Adj. Knob
4	Knob Set Screw
5	Spring
6	Servo-Piston
7	Micro-Switch
8	Electrical Connector