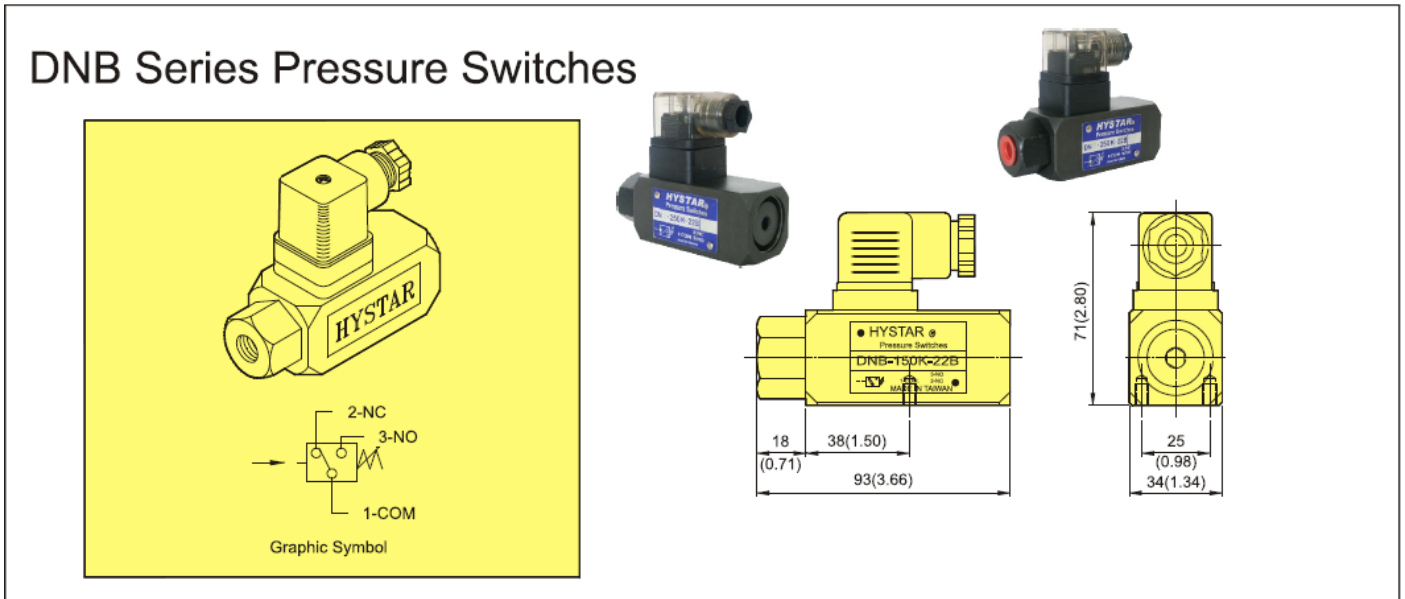


Additional Date/Spec Sheet

DNB Series Pressure Switch – General Type – Allen Key Adjustable

Dimension Drawing:



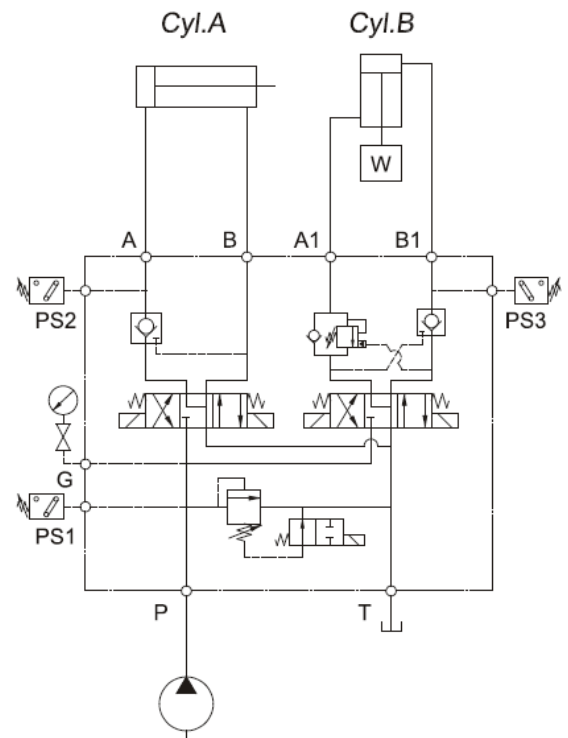
Characteristics

- Mounting position-unlimited.
- Material-body casting-iron,element steel.
- Construction-position type,spring loaded.
- No. drain line.
- Long service life.
- Recommended max. operations 20 per minute.
- Compact and robust with direct pres. read-out.

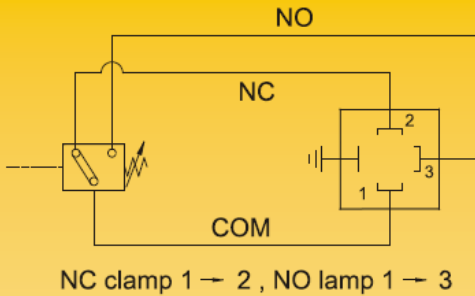
HYSTAR HYDRAULIC Means:

- Improved design and quality.
- Compact structure with.
Carefully picked material.
- Attractive.

Pressure Switches



Graphic Symbol

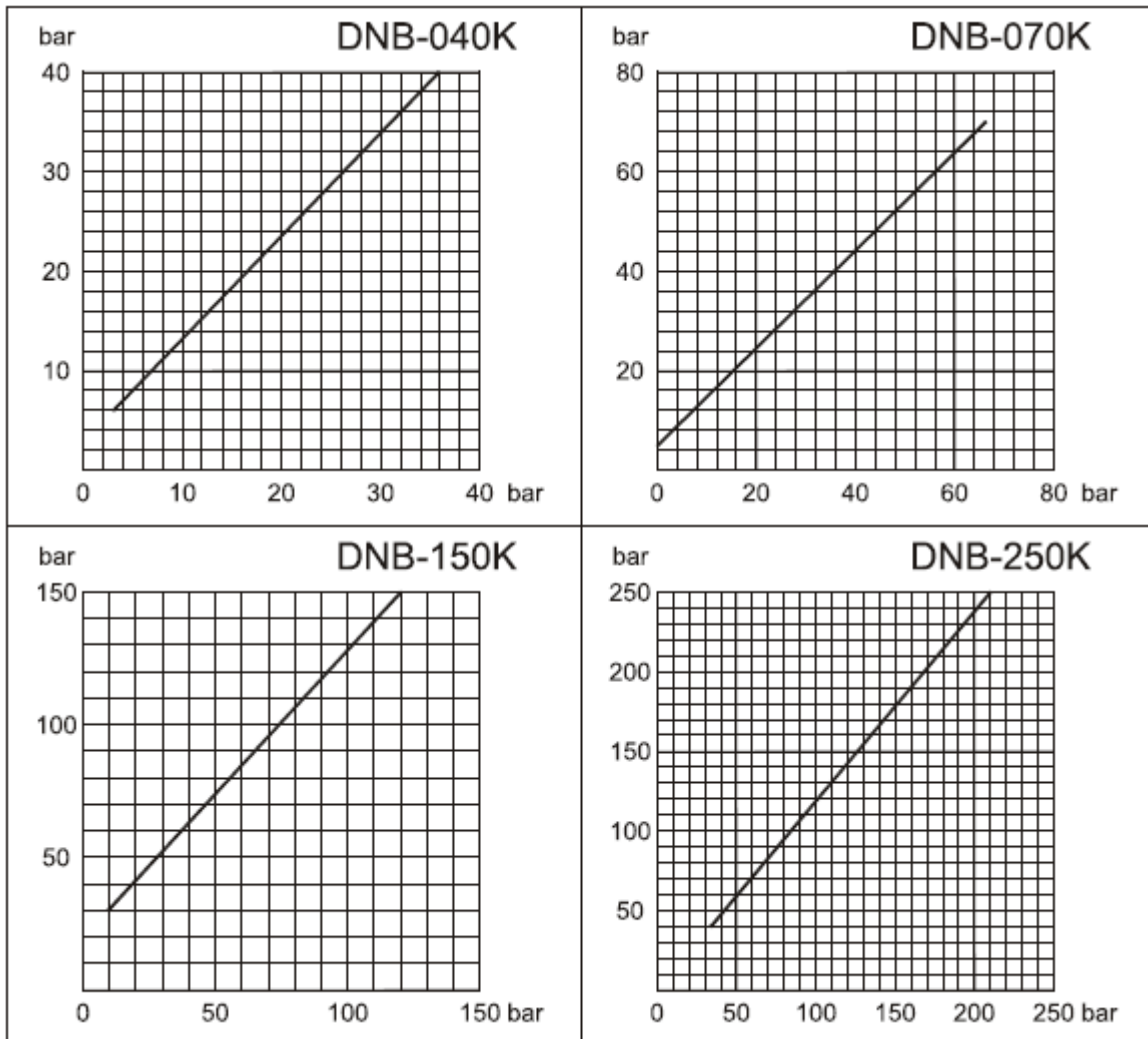


Model	Pres Adj. Range bar	Surge Pres. bar	Weight kg
040K	6~ 40	150	0.6
070K	5~ 70	200	0.6
150K	30~150	300	0.6
250K	40~250	300	0.6

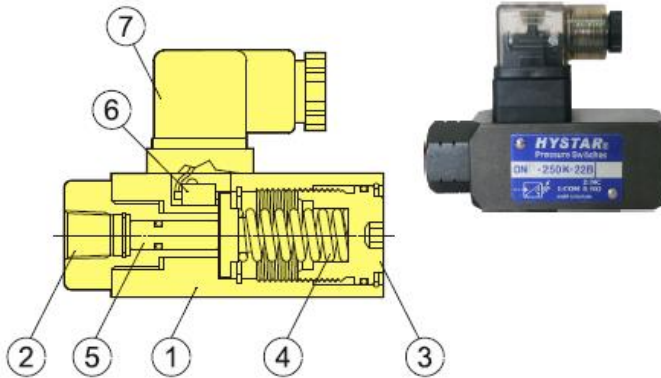
Pressure range

Model	040K	050K	070K	100K	150K	200K	250K	280K	360K	400K
DNB										

Hysteresis Diagramme



Schematic Cross-Section



No.	Part Name
1	Body(Casting-Iron)
2	Connection Port 1/4"PT(Rc)
3	Pressure Adj. Knob
4	Spring
5	Servo-Piston
6	Micro-Switch
7	Electrical Connector