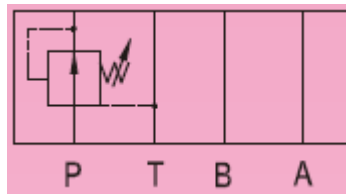


Additional Date/Spec Sheet

Cetop 5 NG10 MRP-03-H Modular Reducing Valve - 3/8"- on Port P – Pressure Control Valve



Model	Max Operating Pres bar (PSI)	Max Flow lpm (USgpm)	Valve Size	Weight kg (lb)
MR* -03-*	250 (3600)	100 (26.5)	3/8"	3.8 (8.3)

H: 70~ 210 bar

(DSG-) 03
(NFPA-D05)

None:
With Knob

20
DIN 912 bolts



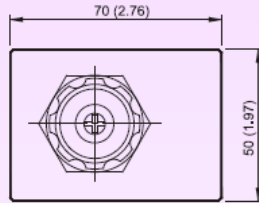
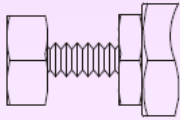
- This valve is employed to keep the pressure of some circuit lower than the main circuit pressure.
- Drain port should be connected to tank.
- Pressure difference between primary pressure and secondary pressure should be maintained over than 10 bar for good pressure reduction.
- Pressure cannot be adjusted if a certain flow rate cannot be obtained.
- The pressure will be increased when the pressure adjustment handle is turned clockwise, and will be reduced when the pressure adjustment handle is turned counter-clockwise.
- Be sure to re-tighten the lock nut firmly after making adjustment to the pressure.

MR*-03

Reducing Valves(Modular Type)

MOUNTING SURFACE:MR*-03-CETOP5
ISO 05-NFPAD05

OPTION
Design No: 30 (3090)



Valve Specifications & Attachment

Flow Rating	100 lpm (26.5 gpm)
Max. Pressure	250 bar (3600 psi)
Weight kg.(lbs.)	3.8 (8.4)
CODE:20	M6 X90LgX4pcs
CODE:2090	1/4-20UNCX3-1/2LgX4pcs
Mounting Surface O-Ring	P12 x 5 pc



SYMBOL

