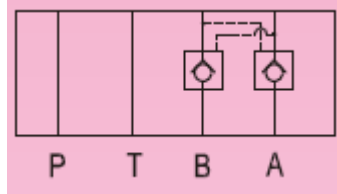


## Additional Date/Spec Sheet

Cetop 5 NG10 MPW-03 Double Pilot Operated Check Valve - 3/8"- on Port A & B – Directional Control Valve



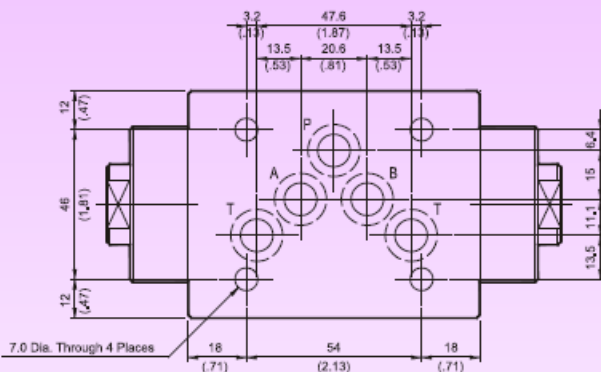
| Model    | Max Operating Pres bar (PSI) | Max Flow lpm (USgpm) | Valve Size | Weight kg (lb) |
|----------|------------------------------|----------------------|------------|----------------|
| MP*-03-* | 250 (3600)                   | 100 (26.5)           | 3/8"       | 3.7 (8.1)      |

- This Valve is of the modular design improved from the pilot operated check valve used for preventing the actuator from self-operating, as well as for valve position holding.
- Cracking pressure of check valve is 2 bar.
- The valve is of the internal drain type.

### MPW - 03

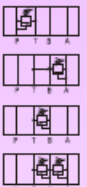
### Pilot Operated Check Valves(Modular Type)

MOUNTING SURFACE:MP\*-03-CETOP5  
ISO 05-NFPAD05



#### Valve Specifications & Attachment

|                                    |                        |
|------------------------------------|------------------------|
| Flow Rating                        | 100 lpm (26.5 gpm)     |
| Max. Pressure                      | 250 bar (3600 psi)     |
| Weight kg/(lbs.)                   | 3.5 (7.7)              |
| CODE:20                            | M6 X90LgX4pcs          |
| CODE:2090                          | 1/4-20UNCX3-1/2LgX4pcs |
| Mounting Surface O-Ring P12 x 5 pc |                        |



SYMBOL



### MPW-03-30

