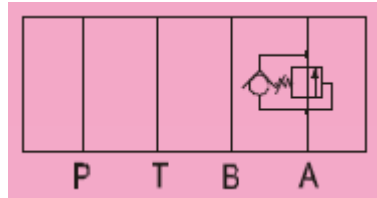


Additional Date/Spec Sheet

Cetop 5 NG6 MHA-03-H Single Modular Sandwich Counterbalance Valve - 3/8" - Pressure Control Valve



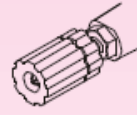
* MHA(B)-0*-* counter-balance modular valves is used for actuator back pressure control.

C: 70~ 250 bar

(DSG-) 03
(NFPA-D05)

None:
With Knob

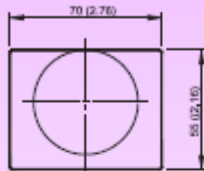
20
DIN 912 bolts



MHB-03

Counterbalance Valves(Modular Type)

MOUNTING SURFACE:MH*-03-CETOP5
ISO 05-NFPAD05

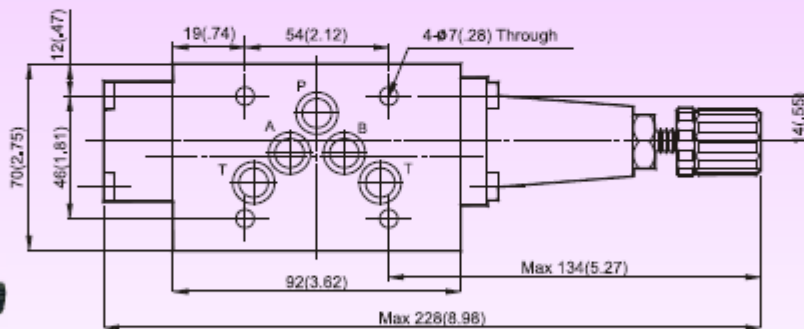


Valve Specifications & Attachment

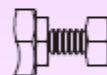
Flow Rating	100 lpm (26.5 gpm)
Max. Pressure	250 bar (3600 psi)
Weight kg(lbs.)	3.5 (7.7)
CODE:20	M8 X90LgX4pcs
CODE:2090	1/4-20UNCX3-1/2LgX4pcs
Mounting Surface O-Ring P12 x 5 pc	



SYMBOL



OPTION
Design No: 30 (3090)



MHB-03

MHP-03

