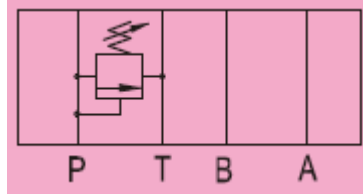


Additional Date/Spec Sheet

Cetop 5 NG10 MBP-03-H Modular Relief Valve - 3/8" - on Port P – Pressure Control Valve



Model	Max Operating Pres bar (PSI)	Max Flow lpm (USgpm)	Valve Size	Weight kg (lb)
MB*-03-	250 (3600)	100 (26.5)	3/8"	3.8 (8.3)

H: 70~ 210 bar

(DSG-) 03 (NFPA-D05)

None: With Knob

20 DIN 912 bolts

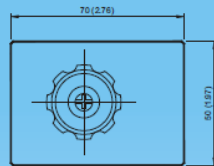
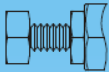


MB*-03

Relief Valves(Modular Type)
(MBA-MBB-MBP-03)

MOUNTING SURFACE: MB*-03-CETOP5
ISO 05-NFPAD05

OPTION
Design No: 30 (3090)

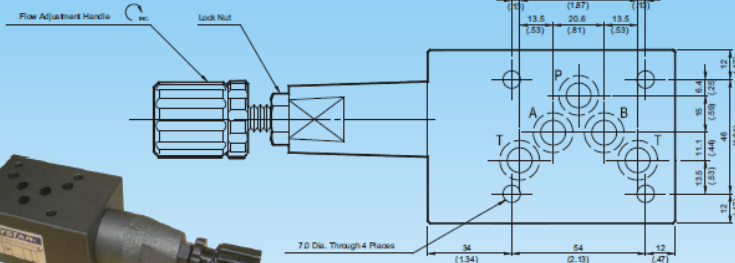


Valve Specifications & Attachment

Flow Rating	100 lpm (26.5 gpm)
Max. Pressure	250 bar (3600 psi)
Weight kg(lbs.)	3.5 (7.7)
CODE:20	M6 X90LgX4pcs
CODE:2090	1/4-20UNCX3-1/2LgX4pcs
Mounting Surface O-Ring P12 x 5 pc	



SYMBOL



MB*-03-L

