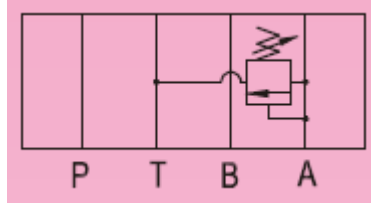


## Additional Date/Spec Sheet

Cetop 5 NG10 MBA-03-H Modular Relief Valve - 3/8" - on Port A – Pressure Control Valve



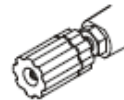
| Model   | Max Operating Pres bar (PSI) | Max Flow lpm (USgpm) | Valve Size | Weight kg (lb) |
|---------|------------------------------|----------------------|------------|----------------|
| MB*-03- | 250 (3600)                   | 100 (26.5)           | 3/8"       | 3.8 (8.3)      |

H: 70~ 210 bar

(DSG-) 03  
(NFPA-D05)

None:  
With Knob

20  
DIN 912 bolts

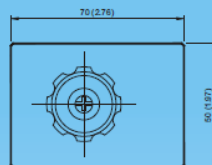
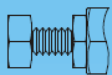


**MB\*-03**

Relief Valves(Modular Type)  
(MBA-MBB-MBP-03)

MOUNTING SURFACE: MB\*-03-CETOP5  
ISO 05-NFPAD05

OPTION  
Design No: 30 (3090)

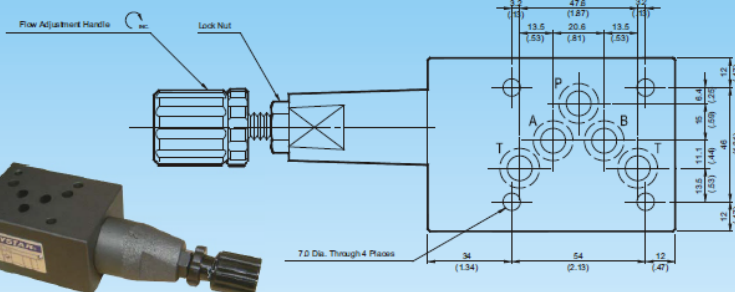


Valve Specifications & Attachment

|                                    |                        |
|------------------------------------|------------------------|
| Flow Rating                        | 100 lpm (26.5 gpm)     |
| Max. Pressure                      | 250 bar (3600 psi)     |
| Weight kg(lbs.)                    | 3.5 (7.7)              |
| CODE:20                            | M6 X90LgX4pcs          |
| CODE:2090                          | 1/4-20UNCX3-1/2LgX4pcs |
| Mounting Surface O-Ring P12 x 5 pc |                        |



SYMBOL



MB\*-03-L

