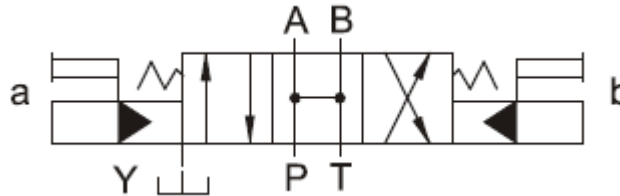


Additional Date/Spec Sheet

Cetop 7 NG16 Pilot Operated Directional Control Valve - **Base Valve Only** - All Ports Open in Neutral

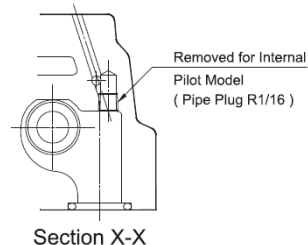
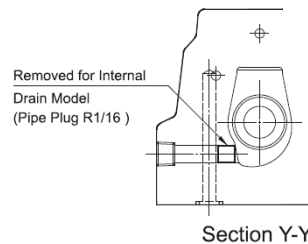
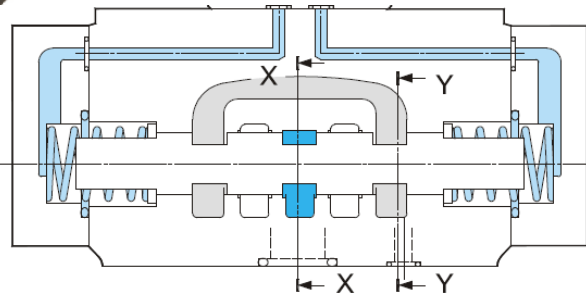
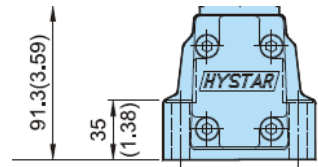
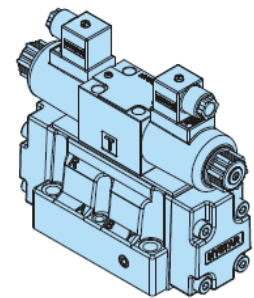
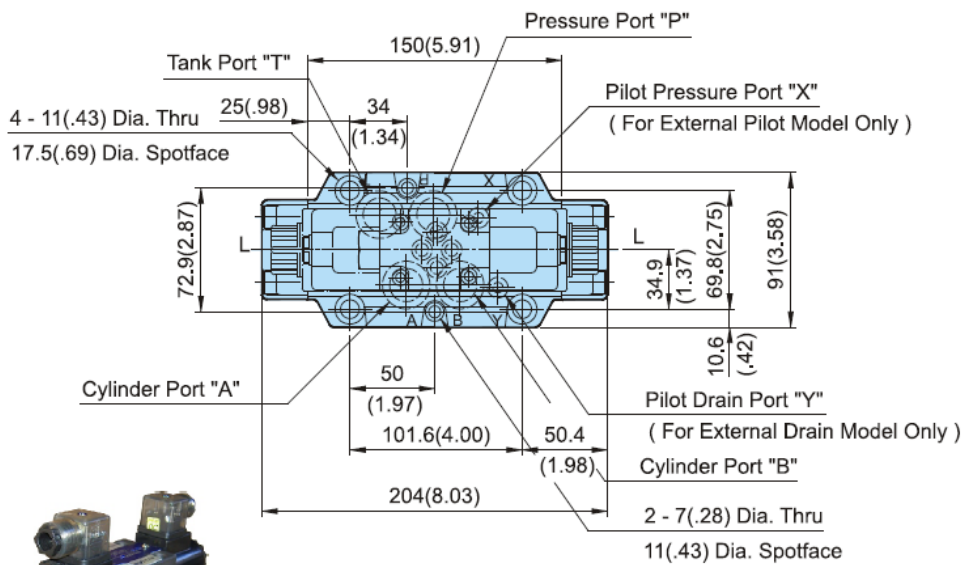
DSHG-3C3-04-30

DSG-3C4-01 to be used on top of Base Valve - Available in AC and DC



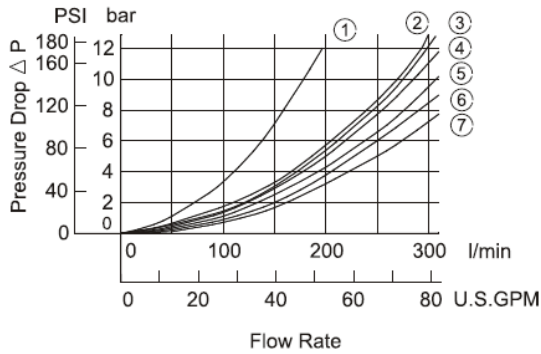
04(1/2")(S)DSHG-***-N-04

MOUNTING SURFACE: DSHG-04-CETOP7
ISO 07-NFPAD07



Attachment Name	Description	Tightening Torque	Code
Soc. Hd. Cap Screw	M6X45LgX2pcs M10X45LgX4pcs	12-15 Nm 58-72 Nm	30

**DSHG-04
DSHG-04-S**



Series	Spool Type	Pressure Drop Curve Number				
		P→A	B→T	P→B	A→T	P→T
DSHG-04 DSHG-04-S	3C2	5(2)	4(2)	5(2)	6(4)	—
	3C3	5	3	5	5	7
	3C4	5(2)	3(3)	5(2)	5(5)	—
	3C40	5(2)	4(4)	5(2)	6(6)	—
	3C5	7	4	5	5	5
	3C6	5(6)	3(4)	5(6)	6(7)	1(2)
	3C60	7	5	7	7	2
	3C7	5	4	5	6	—
	3C9	5	4	5	6	—
	3C10	5(2)	2(2)	5(2)	6(4)	—
	3C11	6	4	5	6	—
	3C12	5(2)	4(2)	5(2)	5(5)	—

Graphs based on fluid viscosity of 35 cSt (162 SSU).
Notes : () curve No. is for shock-less type.

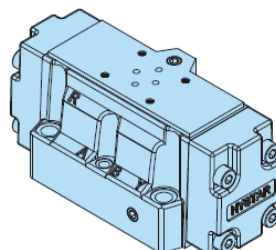
FLOW LIMITATIONS :

Pressure drop is influenced by forces acting within the valve. The graphs shown assume simultaneous equal flow rates P to A or B, and from A or B to T.

Care should be taken in applications where high flow rates are used in conjunction with high pressure. i.e. greater than 250 bar (3600PSI). Also when single flow paths, or substantially different simultaneous flow rates are required between P to A or B, and A or B to T.

FLOW RATINGS CHART [DSHG-(N)-04]

Spool Type	Spring Centered			
	Graphic Symbol	Maximum Flow		
		lpm(USgpm)		
	Model Numbers	100bar (1430PSI)	205bar (2930PSI)	315bar (4500PSI)
	DSHG-3C3-04	300(79.3)	300(79.3)	300(79.3)



Additional Data

NG16 Valves are operated by NG6 solenoid valves on top. For double solenoid NG16 valves, use the DSG 3C4 No1 valve and for single Solenoid NG16 valve use a DSHG 3C2 or 3C3 N04 together with a DSG 2B3 No1 valve. All NG16 valves can be set up in a workshop as "internal" or "external" pilot and "internal" or "external" drain. Ask for assistance if you are not quite clear on this. It is VERY important that the correct configuration be given.!!!

NG16 Valves require a minimum of 4-8Bar, max 250Bar pilot pressure!

High Flow

DSHG-(N)-04 are capable of controlling oil flow up to 300Lpm (79.3gpm)

Flow rate is a little different between different spool types

High Pressure

DSHG-(N)-04 Max operating pressure up to 315Bar (4500Psi)

Totally enclosed molded coil. Specially treated pressure resistant inner tube (SUS304). High grade steel cored (C2503) coil with wet solenoid. All moving parts are immersed in operating oil and muffled to provide low noise operation.

Backpressure

DSHG-(N)-04 permissible backpressure, internal drain 160Bar (2300Psi) and 210Bar (3000Psi) for external drain.

Pipe the return back to tank below the oil level.

Body

Bodies are of high tensile cast iron with large shell cored passages. Spool bores are precision honed with accurately machined land locations.

Spools

Spools are hardened alloy steel (SCM21), precision ground and incorporate balancing grooves. All spools are interchangeable with valve body simplifying maintenance.

Assembly Installation

Spring Centered 3c* valves have no orientation limitation. The DSHG-(N)-04 mounting surface dimensions confirm to ISO 4401, Hydraulic fluid power-Four-port directional control valves-mounting surface. The installation surface should be finer than 6.3S.