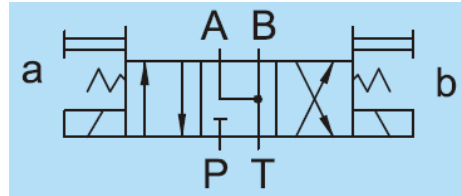


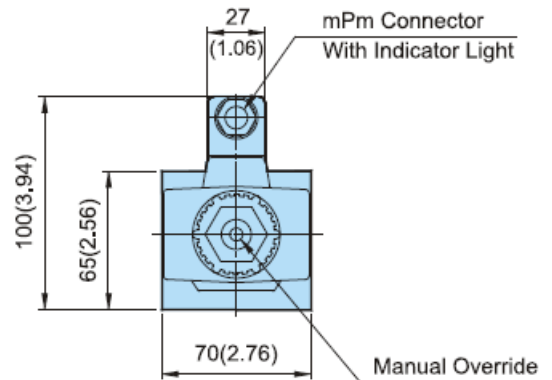
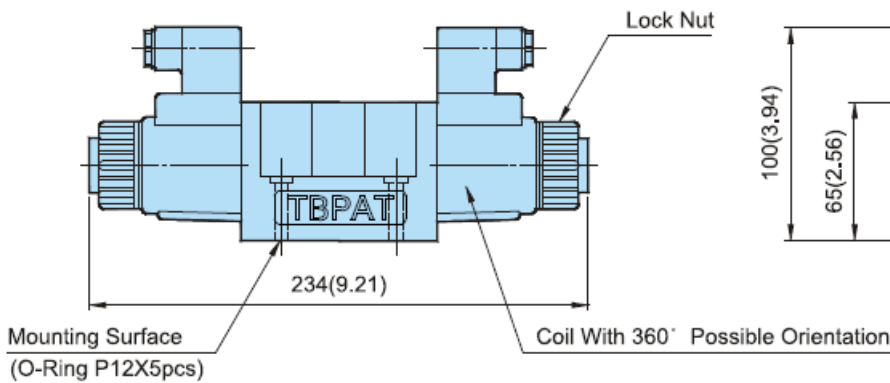
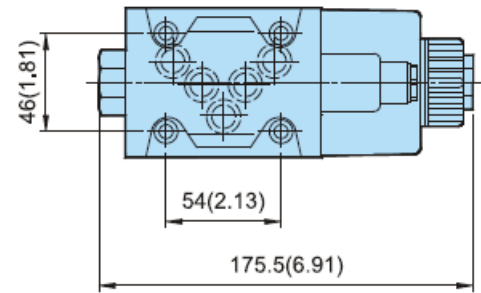
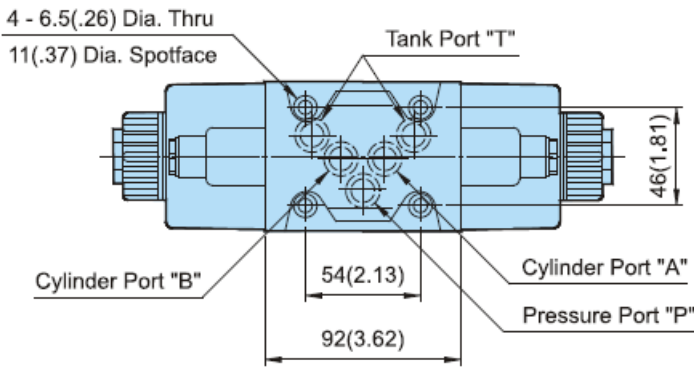
Additional Date/Spec Sheet

NG10 Double Solenoid Operated Directional Control Valve – AC – Spring Centered 3 Position
 Energized Side A: P→A, B→T | Center/Neutral: A & B Open to T, P Blocked | Energized Side B: A→T, P→B



DSG-N-03-AC

**MOUNTING SURFACE: DSG-03-CETOP5
ISO 05-NFPAD05**



Attachment Name	Description	Tightening Torque	Code
Soc. Hd. Cap Screw	M6 X35LgX4pcs	12-15 Nm	30
Soc. Hd. Cap Screw	1/4-20UNCX1-1/2"LgX4pcs	105-130 in.lbs	3090

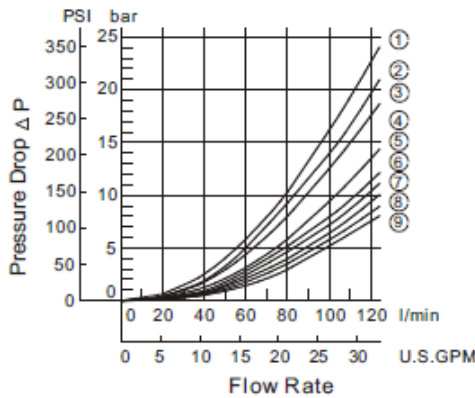
VALVES RESPONSE CAPACITY

Model	Working Direction	Spring Centered Type (3C*)	Unit : Times/Second	
			No Spring Type (2D*)	Spring Offset Type (2B*)
DSG-03-AC	Energization Spring back	0.005~0.025	0.010~0.020	0.01~0.02
		0.005~0.030	-----	0.010~0.030

Above response time test condition for DSG-03 is based on 140Bar/2000Psi, 45Lpm/11.9Usgpm

PRESSURE DROP:

DSG-03



Series	Spool Type	Pressure Drop Curve Number				
		P→A	B→T	P→B	A→T	P→T
DSG-03	3C2	7	7	7	7	—
	3C3	9	9	9	9	5
	3C4	7	8	7	8	—
	3C40	7	7	7	7	—
	3C60	6	5	6	5	1
	3C9	9	7	9	7	—
	3C10	7	8	7	7	—
	3C12	7	7	7	8	—
	2D2	4	3	6	6	—
	2B2	2	1	7	7	—
2B3	3	2	9	9	—	
2B8	6	—	5	—	—	

Graphs based on fluid viscosity of 35 cSt(162 SSU)

FLOW LIMITATIONS :

Pressure drop is influenced by forces acting within the valve. The graphs shown assume simultaneous equal flow rates P to A or B, and from A or B to T. Care should be taken in applications where high flow rates are used in conjunction with high pressure. i.e. greater than 250 bar(3600PSI). Also when single flow paths, or substantially different simultaneous flow rates are required between P to A or B, and A or B to T.

No. of Valve Positions	Spool -Spring Arrangement	Model Numbers & Description	Graphic Symbols	Max. Flow lpm (USgpm)								
							P → A [Port "B" Blocked]			P → B [Port "A" Blocked]		
				80bar (1140PSI)	190bar (2715PSI)	315bar (4500PSI)	80bar (1140PSI)	190bar (2715PSI)	315bar (4500PSI)	80bar (1140PSI)	190bar (2715PSI)	315bar (4500PSI)
3 Position Spring Centred	DSG-3C4-03 Closed Center P Only		80(21.1)	80(21.1)	80(21.1) 25(6.6) 30(7.9) 15(4.0)	100(26.4) 58(15.3) 90(23.8) 47(12.4)	88(23.2) 27(7.1) 39(10.3) 22(5.8)	46(12.1) 19(5.0) 22(5.8) 15(4.0)	100(26.4) 58(15.3) 90(23.8) 47(12.4)	88(23.2) 27(7.1) 39(10.3) 22(5.8)	46(12.1) 19(5.0) 22(5.8) 15(4.0)	

SOLENOID SPECIFICATIONS

AC/DC CURRENT		AC			
VOLTAGE (V)		AC110V		AC220V	
FREQUENCY (Hz)		50	60	50	60
DSG (03)	Starting current (A)	5.37	5.03	2.69	2.52
	Holding current (A)	0.70	0.75	0.30	0.35
3/8"	Holding electrical power (W)	-	-	-	-
Permissible voltage		95~120		200~235	