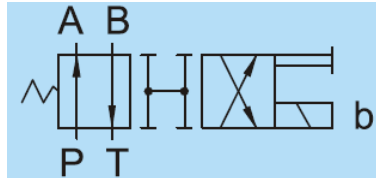


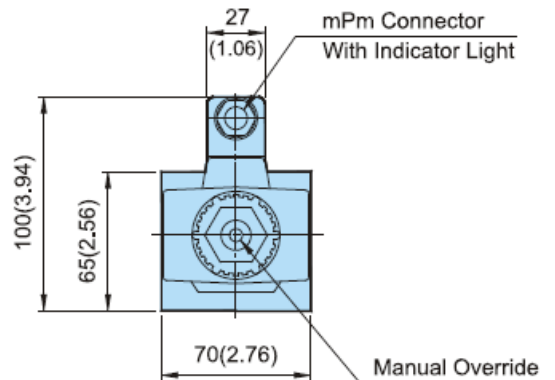
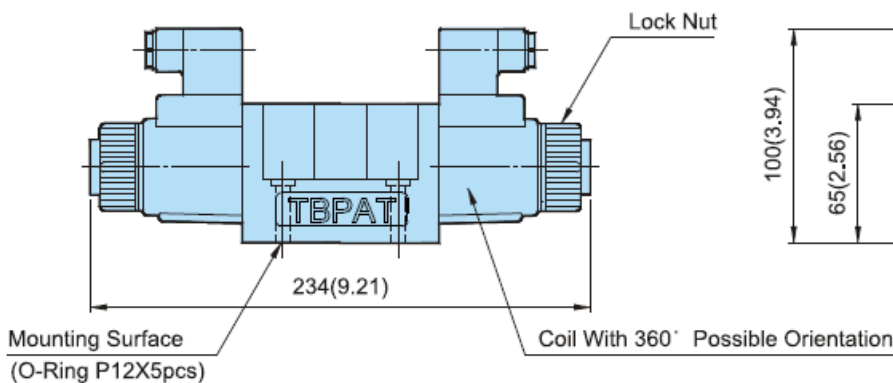
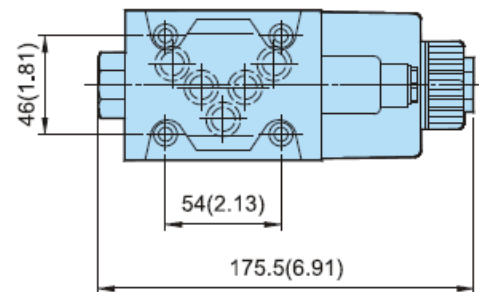
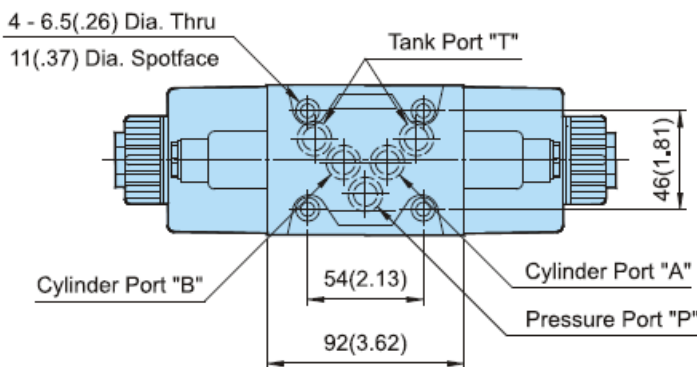
Additional Date/Spec Sheet

NG10 Single Solenoid Operated Directional Control Valve – AC – Spring Offset 2 Position
Neutral/Off P→A, B→T | Crossover all Ports Open | Energized/On A→T, P→B



DSG-N-03-AC

**MOUNTING SURFACE: DSG-03-CETOP5
ISO 05-NFPAD05**



Attachment Name	Description	Tightening Torque	Code
Soc. Hd. Cap Screw	M6 X35LgX4pcs	12-15 Nm	30
Soc. Hd. Cap Screw	1/4-20UNCX1-1/2"LgX4pcs	105-130 in.lbs	3090

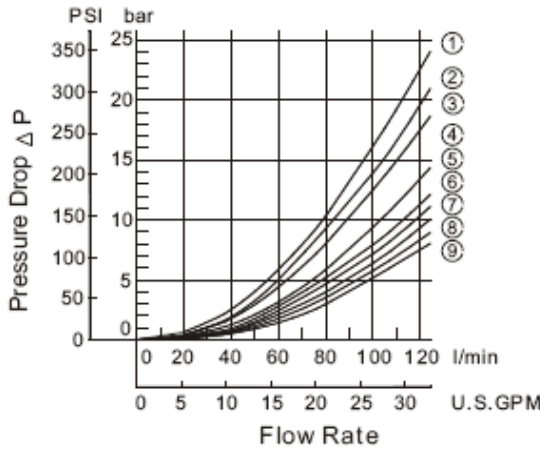
VALVES RESPONSE CAPACITY

Model	Working Direction	Spring Centered Type (3C*)	No Spring Type (2D*)	Unit : Times/Second	
				Spring Offset Type (2B*)	Spring Offset Type (2B*)
DSG-03-AC	Energization Spring back	0.005~0.025	0.010~0.020	0.01~0.02	0.010~0.030
		0.005~0.030	-----	0.010~0.030	

Above response time test condition for DSG-03 is based on 140Bar/2000Psi, 45Lpm/11.9Usgpm

PRESSURE DROP:

DSG-03

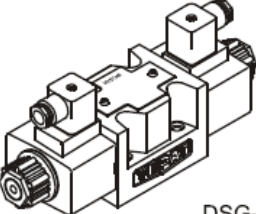



Series	Spool Type	Pressure Drop Curve Number				
		P→A	B→T	P→B	A→T	P→T
DSG-03	3C2	⑦	⑦	⑦	⑦	—
	3C3	⑨	⑨	⑨	⑨	⑤
	3C4	⑦	⑧	⑦	⑧	—
	3C40	⑦	⑦	⑦	⑦	—
	3C60	⑥	⑤	⑥	⑤	①
	3C9	⑨	⑦	⑨	⑦	—
	3C10	⑦	⑧	⑦	⑦	—
	3C12	⑦	⑦	⑦	⑧	—
	2D2	④	③	⑥	⑥	—
	2B2	②	①	⑦	⑦	—
	2B3	③	②	⑨	⑨	—
	2B8	⑥	—	⑤	—	—

No. of Valve Positions	Spool -Spring Arrangement	Model Numbers & Description	Graphic Symbols	Max. Flow lpm (USgpm)								
							P → A [Port "B" Blocked]			P → B [Port "A" Blocked]		
				80bar (1140PSI)	190bar (2715PSI)	315bar (4500PSI)	80bar (1140PSI)	190bar (2715PSI)	315bar (4500PSI)	80bar (1140PSI)	190bar (2715PSI)	315bar (4500PSI)
2 Position Spring Offset		DSG-2B3-03 P → A, B → T (2 Way)		100(26,4)	100(26,4)	100(26,4)	57(15,1)	57(15,1)	57(15,1)	100(26,4)	100(26,4)	100(26,4)
				100(26,4) 75(19,8)	100(26,4) 75(19,8)	100(26,4) 75(19,8)				79(20,9)	68(18,0)	59(15,6)

SOLENOID SPECIFICATIONS

AC/DC CURRENT		AC			
VOLTAGE (V)		AC110V		AC220V	
FREQUENCY (Hz)		50	60	50	60
DSG (03) 3/8"	Starting current (A)	5.37	5.03	2.69	2.52
	Holding current (A)	0.70	0.75	0.30	0.35
	Holding electrical power (W)	-	-	-	-
Permissible voltage		95~120		200~235	

DIN TYPE HYDRAULIC SOLENOID VALVES	Graphic Symbol	Q max. lpm (USgpm)	P max. bar(PSI)	Valve Size
 <p>DSG-N-03-AC</p>		120(31.70)	315(4500)	3/8"