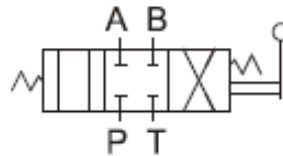


## Additional Date/Spec Sheet

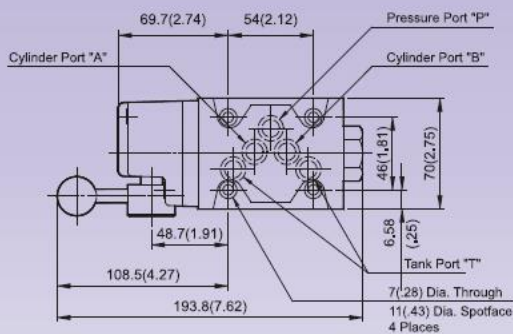
NG10 Manually (Lever) Operated Directional Valve – Spring Centered - 3 Position – 3/8"  
 Energized Side A: P→A, B→T | Center/Neutral: all Ports Blocked | Energized Side B: A→T, P→B

<p><b>SPRING CENTERED 3 POSITION</b></p>	<p><b>GRAPHIC SYMBOLS (STANDARD)</b></p>
--	--

3C2



**DMG-03-30** Manually Operated Directional Valves(Sub-Plate Type)



**Valve Specifications & Attachment**

Model	DMG-03
Flow Rating	120 lpm (31.7 gpm)
Max. Pressure	315 bar (4500 psi)
Weight kg(lbs.)	3.8 (8.3)
CODE:20	M5 X45Lx4pcs
CODE:2090	10-24UNCX1/34"1gX4pcs
Surface O-Ring	P12X5pc

