

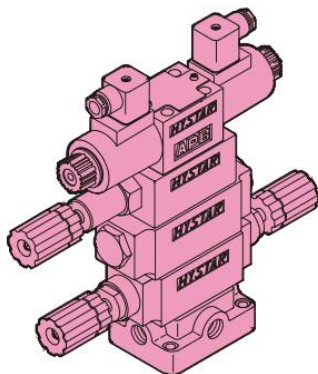
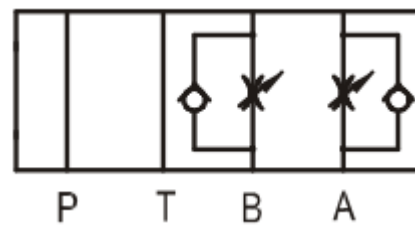
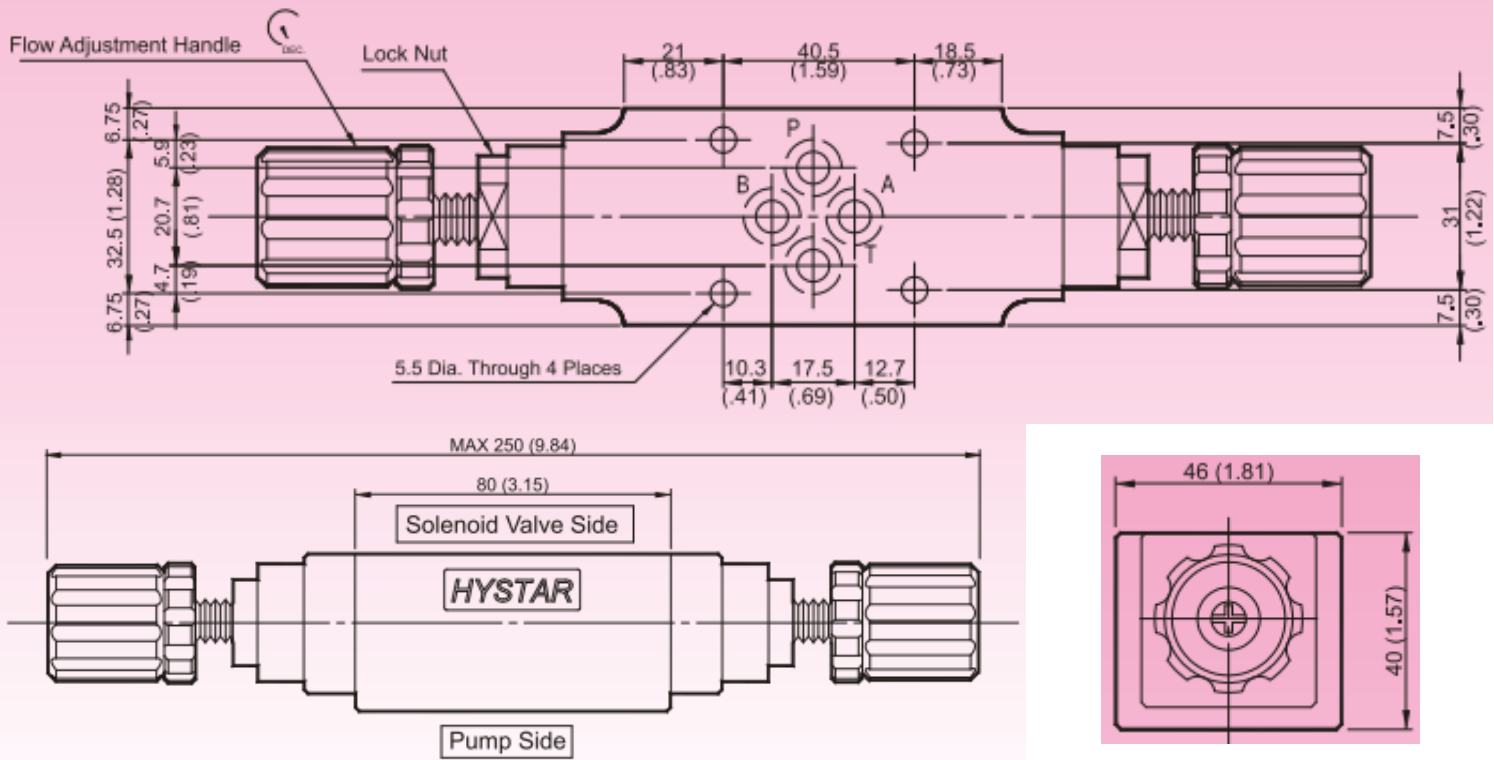
Additional Data/Spec Sheet

NG6 Dual Flow Control / Throttle + Check Valve – Control Line Port A&B – Meter Out – Pressure Adj Range 5~50Bar

MSW-01

Throttle with Check Valves(Modular Type)

MOUNTING SURFACE:MS*-01-CETOP3
ISO 03-NFPAD03



Valve Specifications & Attachment

Flow Rating	50 lpm (13.2 gpm)
Max. Pressure	250 bar (3600 psi)
Weight kg(lbs.)	1.5 (3.3)
CODE:20	M5 X85LgX4pcs
CODE:2090	10-24UNCX3-1/4"LgX4pcs
Mounting Surface O-Ring P9 x 4 pc	