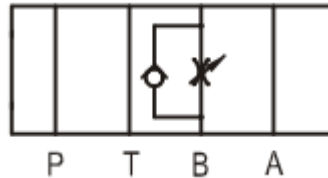
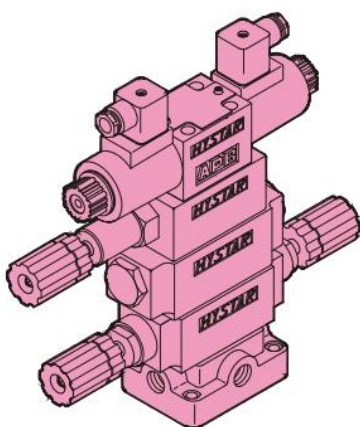


Additional Data/Spec Sheet

NG6 Flow Control / Throttle + Check Valve – Control Line Port B – Meter Out – Pressure Adj Range 5 ~ 50Bar



Model	Max Operating Pres bar (PSI)	Max Flow lpm (USgpm)	Valve Size	Weight kg (lb)
MS*-01-*	250 (3600)	50 (13.2)	1/8"	1.5 (3.3)



Valve Specifications & Attachment

Flow Rating	50 lpm (13.2 gpm)
Max. Pressure	250 bar (3600 psi)
Weight kg(lbs.)	1.5 (3.3)
CODE:20	M5 X85LgX4pcs
CODE:2090	10-24UNCX3-1/4"LgX4pcs
Mounting Surface O-Ring P9 x 4 pc	