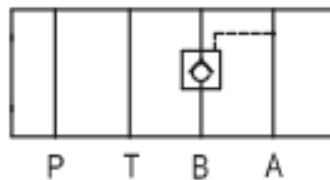
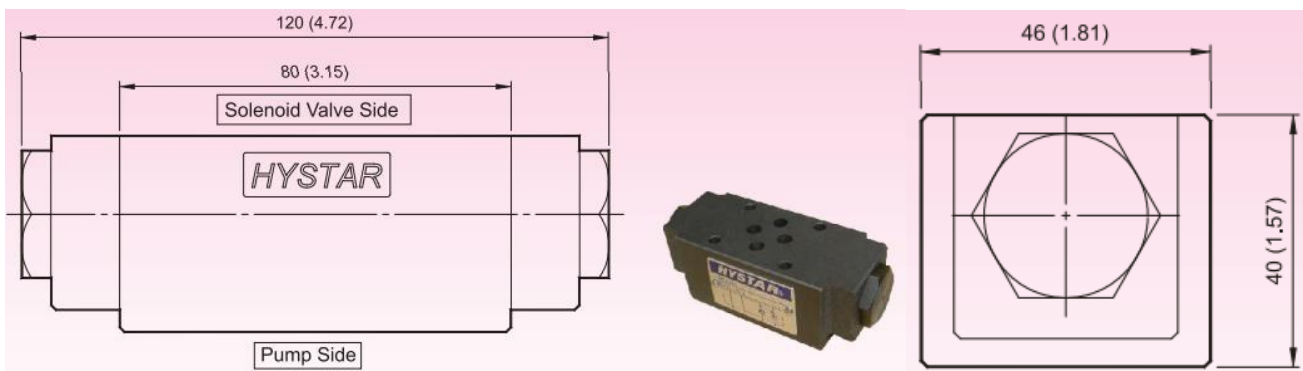
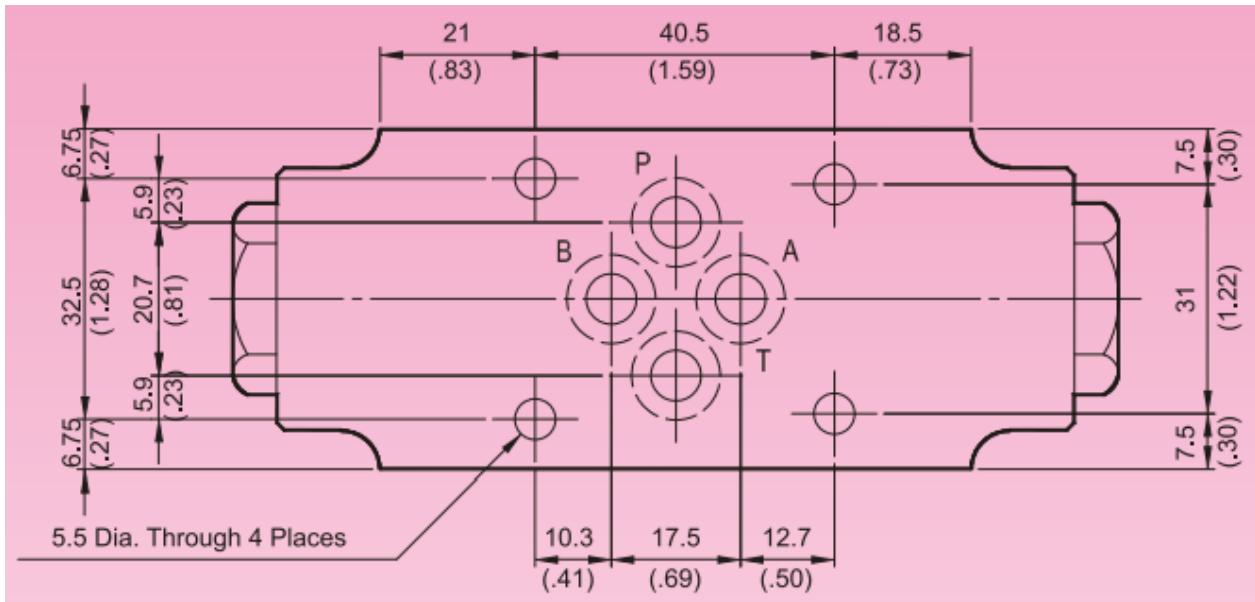


**Additional Data/Spec Sheet**

**NG6 Single Pilot Operated Check Valve – Modular Type – Control Line Port B**



**Valve Specifications & Attachment**

Flow Rating	50 lpm (13.2 gpm)
Max. Pressure	250 bar (3600 psi)
Weight kg.(lbs.)	1.2 (2.6)
CODE:20	M5 X85LgX4pcs
CODE:2090	10-24UNCX3-1/4"LgX4pcs
Mounting Surface O-Ring P9 x 4 pc	

