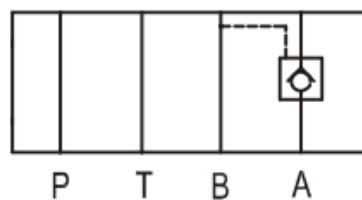
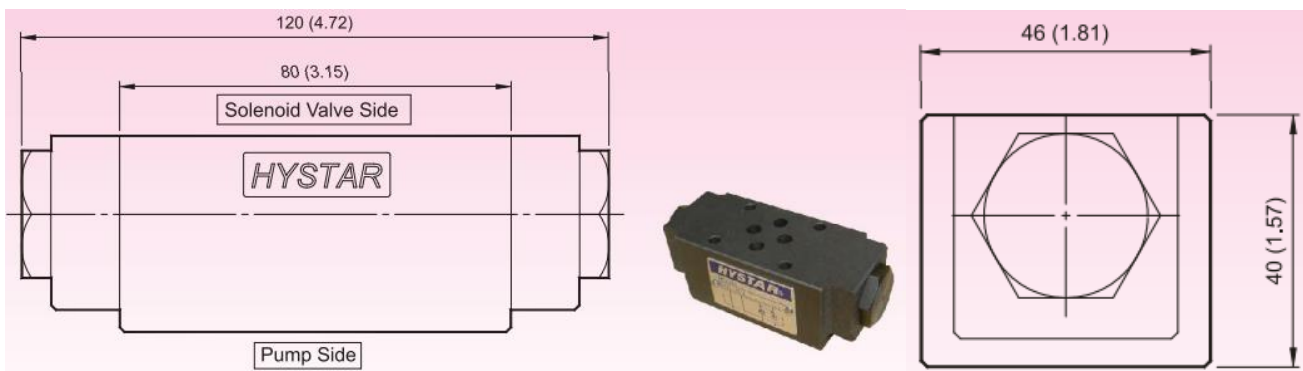
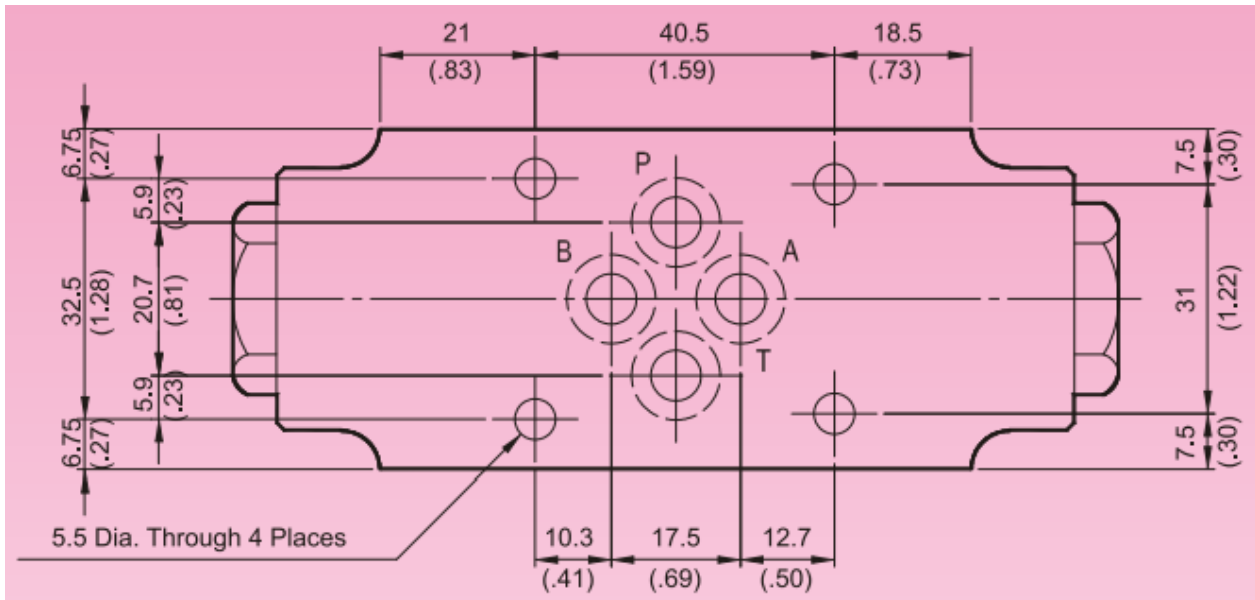


Additional Data/Spec Sheet

NG6 Single Pilot Operated Check Valve – Modular Type – Control Line Port A



Valve Specifications & Attachment

| | |
|-----------------------------------|------------------------|
| Flow Rating | 50 lpm (13.2 gpm) |
| Max. Pressure | 250 bar (3600 psi) |
| Weight kg.(lbs.) | 1.2 (2.6) |
| CODE:20 | M5 X85LgX4pcs |
| CODE:2090 | 10-24UNCX3-1/4"LgX4pcs |
| Mounting Surface O-Ring P9 x 4 pc | |

