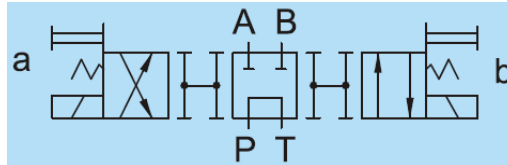


### Additional Date/Spec Sheet

NG6 Double Solenoid Operated Directional Control Valve – AC – Spring Centered 3 Position  
 Energized Side A: A→T, P→B | Center/Neutral: A & B Blocked, P Open to T | Energized Side B: P→A, B→T



### DIMENSIONS

### MILLIMETERS(INCHES)

DSG-N-01-AC

MOUNTING SURFACE:DSG-01-CETOP3  
ISO 03-NFPAD03

4 - 5.5(.22) Dia. Thru.  
9.5(.37) Dia. C'Bore

Pressure Port "P"

Cylinder Port "A"

Cylinder Port "B"

Tank Port "T"

Lock Nut

mpm Connector With Indicator Light

Manual Override

Mounting Surface (O-Ring P9X4pcs)

Coil With 360° Possible Orientation

Attachment Name	Description	Tightening Torque	Code
Soc. Hd. Cap Screw	M5 X45LgX4pcs	5-7 Nm	30
Soc. Hd. Cap Screw	10-24UNCX1-3/4"LgX4pcs	43-60 in.lbs	3090

### VALVES RESPONSE CAPACITY

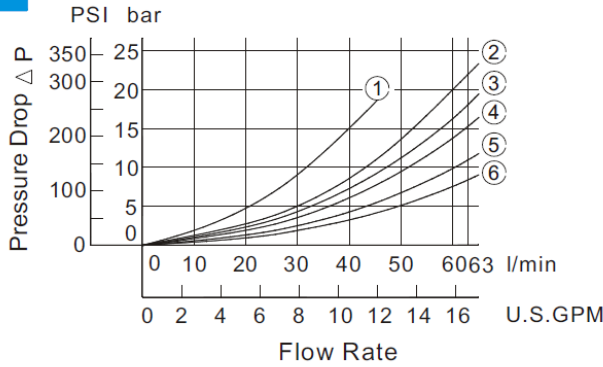
Unit : Times/Second

Model	Working Direction	Spring Centered Type (3C*)	No Spring Type (2D*)	Spring Offset Type (2B*)
DSG-01-AC	Energization Spring back	0.01~0.02	0.01~0.02	0.01~0.02
		0.015~0.05	-----	0.015~0.05

Above response time test condition for DSG-01 is based on 140Bar/2000Psi, 30Lpm/7.9Usppm

### PRESSURE DROP:

#### DSG-01



Series	Spool Type	Pressure Drop Curve Number				
		P→A	B→T	P→B	A→T	P→T
DSG-01	3C2	⑤	⑤	⑤	⑤	—
	3C3	⑥	⑥	⑥	⑥	④
	3C4	⑤	⑥	⑤	⑥	—
	3C40	⑤	⑤	⑤	⑤	—
	3C60	①	①	①	①	④
	3C9	⑥	⑤	⑥	⑤	—
	3C10	⑤	⑥	⑤	⑥	—
	3C12	⑤	⑤	⑤	⑥	—
	2D2	⑤	②	⑤	②	—
	2B2	②	②	⑤	⑤	—
	2B3	③	③	⑤	⑥	—
	2B8	⑤	—	⑤	—	—

No. of Valve Positions	Spool -Spring Arrangement	Model Numbers & Description	Graphic Symbols	Max. Flow lpm (USgpm)								
							P → A [Port "B" Blocked]			P → B [Port "A" Blocked]		
				80bar (1140PSI)	190bar (2715PSI)	315bar (4500PSI)	80bar (1140PSI)	190bar (2715PSI)	315bar (4500PSI)	80bar (1140PSI)	190bar (2715PSI)	315bar (4500PSI)
3 Position Spring Centered		DSG-3C60-01 Tandem Open		43(11.4)	40(10.6)	-	43(11.4)	40(10.6)	-	43(11.4)	40(10.6)	-

### SOLENOID SPECIFICATIONS

AC/DC CURRENT		AC			
VOLTAGE (V)		AC110V		AC220V	
FREQUENCY (Hz)		50	60	50	60
DSG (01)	Starting current (A)	2.38	2.33	1.19	1.17
	Holding current (A)	0.40	0.45	0.20	0.23
1/8"	Holding electrical power (W)	-	-	-	-