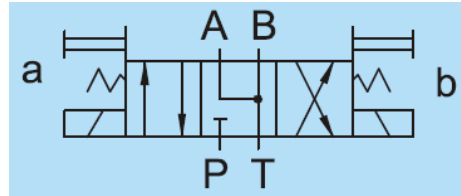


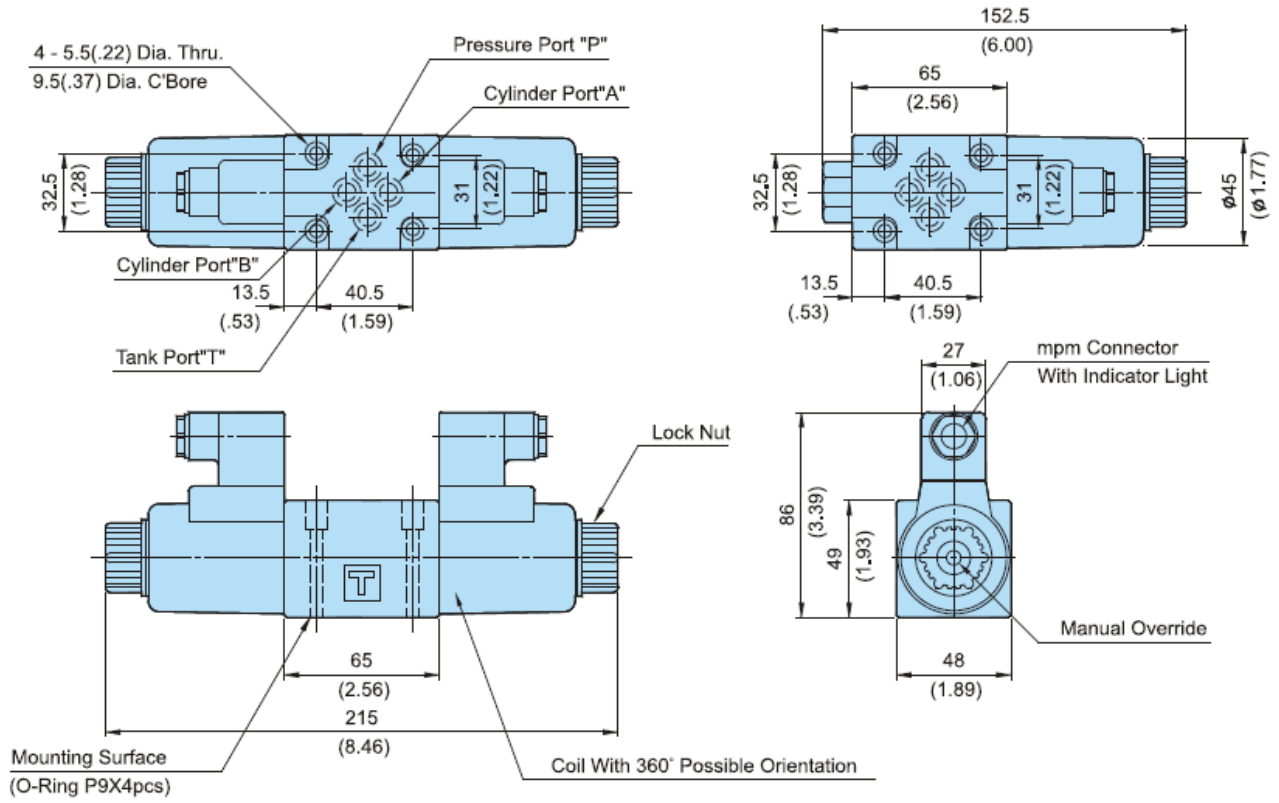
Additional Date/Spec Sheet

NG6 Double Solenoid Operated Directional Control Valve – DC – Spring Centered 3 Position
 Energized Side A: P→A, B→T | Center/Neutral: A & B Open to T, P Blocked | Energized Side B: A→T, P→B



DSG-N-01-DC/RAC

**MOUNTING SURFACE:DSG-01-CETOP3
ISO 03-NFPAD03**



Attachment Name	Description	Tightening Torque	Code
Soc. Hd. Cap Screw	M5 X45LgX4pcs	5-7 Nm	30
Soc. Hd. Cap Screw	10-24UNCX1-3/4"LgX4pcs	43-60 in.lbs	3090

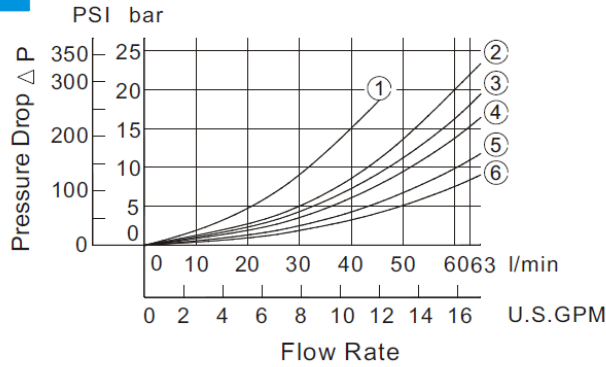
VALVES RESPONSE CAPACITY

Model	Working Direction	Spring Centered Type (3C*)	Unit : Times/Second	
			No Spring Type (2D*)	Spring Offset Type (2B*)
DSG-01-DC/RAC	Energization Spring back	0.02~0.05	0.02~0.05	0.02~0.05
		0.015~0.05	-----	0.015~0.05

Above response time test condition for DSG-01 is based on 140Bar/2000Psi, 30Lpm/7.9Usqpm

PRESSURE DROP:

DSG-01



Series	Spool Type	Pressure Drop Curve Number				
		P→A	B→T	P→B	A→T	P→T
DSG-01	3C2	⑤	⑤	⑤	⑤	—
	3C3	⑥	⑥	⑥	⑥	④
	3C4	⑤	⑥	⑤	⑥	—
	3C40	⑤	⑤	⑤	⑤	—
	3C60	①	①	①	①	④
	3C9	⑥	⑤	⑥	⑤	—
	3C10	⑤	⑥	⑤	⑥	—
	3C12	⑤	⑤	⑤	⑥	—
	2D2	⑤	②	⑤	②	—
	2B2	②	②	⑤	⑤	—
	2B3	③	③	⑤	⑥	—
	2B8	⑤	—	⑤	—	—

No. of Valve Positions	Spool -Spring Arrangement	Model Numbers & Description	Graphic Symbols	Max. Flow lpm (USgpm)								
							P → A [Port "B" Blocked]			P → B [Port "A" Blocked]		
				80bar (1140PSI)	190bar (2715PSI)	315bar (4500PSI)	80bar (1140PSI)	190bar (2715PSI)	315bar (4500PSI)	80bar (1140PSI)	190bar (2715PSI)	315bar (4500PSI)
3 Position Spring Centered	DSG-3C4-01 Closed Center P Only			63(16.6)	63(16.6)	35(9.2)	53(14)	33(8.7)	28(7.4)	53(14)	33(8.7)	28(7.4)
						23(6.1)	40(10.6)	20(5.3)	13(3.4)	40(10.6)	20(5.3)	13(3.4)

SOLENOID SPECIFICATIONS

AC/DC CURRENT		DC			
		RECTIFIED INSIDE		DC12	DC24
VOLTAGE (V)		R110V	R220V		
FREQUENCY (Hz)		50/60	50/60		
DSG (01)	Starting current (A)	-	-	-	-
	Holding current (A)	0.30	0.15	2.2	1.1
1/8"	Holding electrical power (W)	26	26	26	26