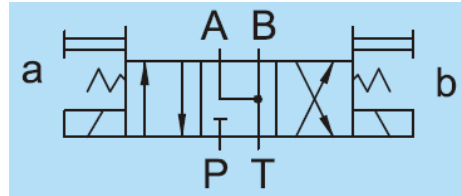


Additional Date/Spec Sheet

NG6 Double Solenoid Operated Directional Control Valve - AC - Spring Centered 3 Position
 Energized Side A: P→A, B→T | Center/Neutral: A & B Open to T, P Blocked | Energized Side B: A→T, P→B



DIMENSIONS

MILLIMETERS(INCHES)

DSG-N-01-AC

MOUNTING SURFACE: DSG-01-CETOP3
ISO 03-NFPAD03

4 - 5.5(.22) Dia. Thru.
9.5(.37) Dia. C'Bore

Pressure Port "P"

Cylinder Port "A"

31 (1.22)

32.5 (1.28)

Cylinder Port "B"

13.5 (.53)

40.5 (1.59)

Tank Port "T"

141.5 (5.57)

65 (2.56)

32.5 (1.28)

13.5 (.53)

40.5 (1.59)

mpm Connector With Indicator Light

27 (1.06)

86 (3.39)

49 (1.93)

Manual Override

48 (1.89)

Lock Nut

65 (2.56)

193 (7.60)

Mounting Surface (O-Ring P9X4pcs)

Coil With 360° Possible Orientation

Attachment Name	Description	Tightening Torque	Code
Soc. Hd. Cap Screw	M5 X45LgX4pcs	5-7 Nm	30
Soc. Hd. Cap Screw	10-24UNCX1-3/4"LgX4pcs	43-60 in.lbs	3090

VALVES RESPONSE CAPACITY

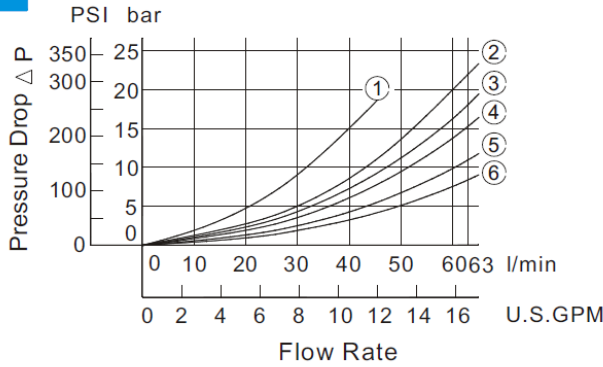
Unit : Times/Second

Model	Working Direction	Spring Centered Type (3C*)	No Spring Type (2D*)	Spring Offset Type (2B*)
DSG-01-AC	Energization Spring back	0.01~0.02	0.01~0.02	0.01~0.02
		0.015~0.05	-----	0.015~0.05

Above response time test condition for DSG-01 is based on 140Bar/2000Psi, 30Lpm/7.9Usgpm

PRESSURE DROP:

DSG-01



Series	Spool Type	Pressure Drop Curve Number				
		P→A	B→T	P→B	A→T	P→T
DSG-01	3C2	⑤	⑤	⑤	⑤	—
	3C3	⑥	⑥	⑥	⑥	④
	3C4	⑤	⑥	⑤	⑥	—
	3C40	⑤	⑤	⑤	⑤	—
	3C60	①	①	①	①	④
	3C9	⑥	⑤	⑥	⑤	—
	3C10	⑤	⑥	⑤	⑥	—
	3C12	⑤	⑤	⑤	⑥	—
	2D2	⑤	②	⑤	②	—
	2B2	②	②	⑤	⑤	—
	2B3	③	③	⑤	⑥	—
	2B8	⑤	—	⑤	—	—

No. of Valve Positions	Spool -Spring Arrangement	Model Numbers & Description	Graphic Symbols	Max. Flow lpm (USgpm)								
							P → A [Port "B" Blocked]			P → B [Port "A" Blocked]		
				80bar (1140PSI)	190bar (2715PSI)	315bar (4500PSI)	80bar (1140PSI)	190bar (2715PSI)	315bar (4500PSI)	80bar (1140PSI)	190bar (2715PSI)	315bar (4500PSI)
3 Position Spring Centered	DSG-3C4-01 Closed Center P Only			63(16.6)	63(16.6)	63(16.6)	63(16.6)	63(16.6)	55(14.5)	63(16.6)	63(16.6)	55(14.5)
				48(12.7)	23(6.1)	15(4.0)	10(2.6)	23(6.1)	15(4.0)	10(2.6)		
				63(16.6)	50(13.2)	28(7.4)	13(3.4)	50(13.2)	28(7.4)	13(3.4)		
				43(11.4)	18(4.8)	13(3.4)	5(1.3)	18(4.8)	13(3.4)	5(1.3)		

SOLENOID SPECIFICATIONS

AC/DC CURRENT		AC			
VOLTAGE (V)		AC110V		AC220V	
FREQUENCY (Hz)		50	60	50	60
DSG (01)	Starting current (A)	2.38	2.33	1.19	1.17
	Holding current (A)	0.40	0.45	0.20	0.23
1/8"	Holding electrical power (W)	-	-	-	-