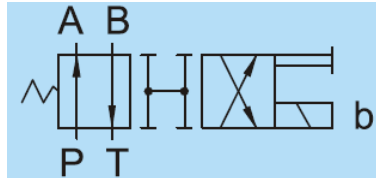


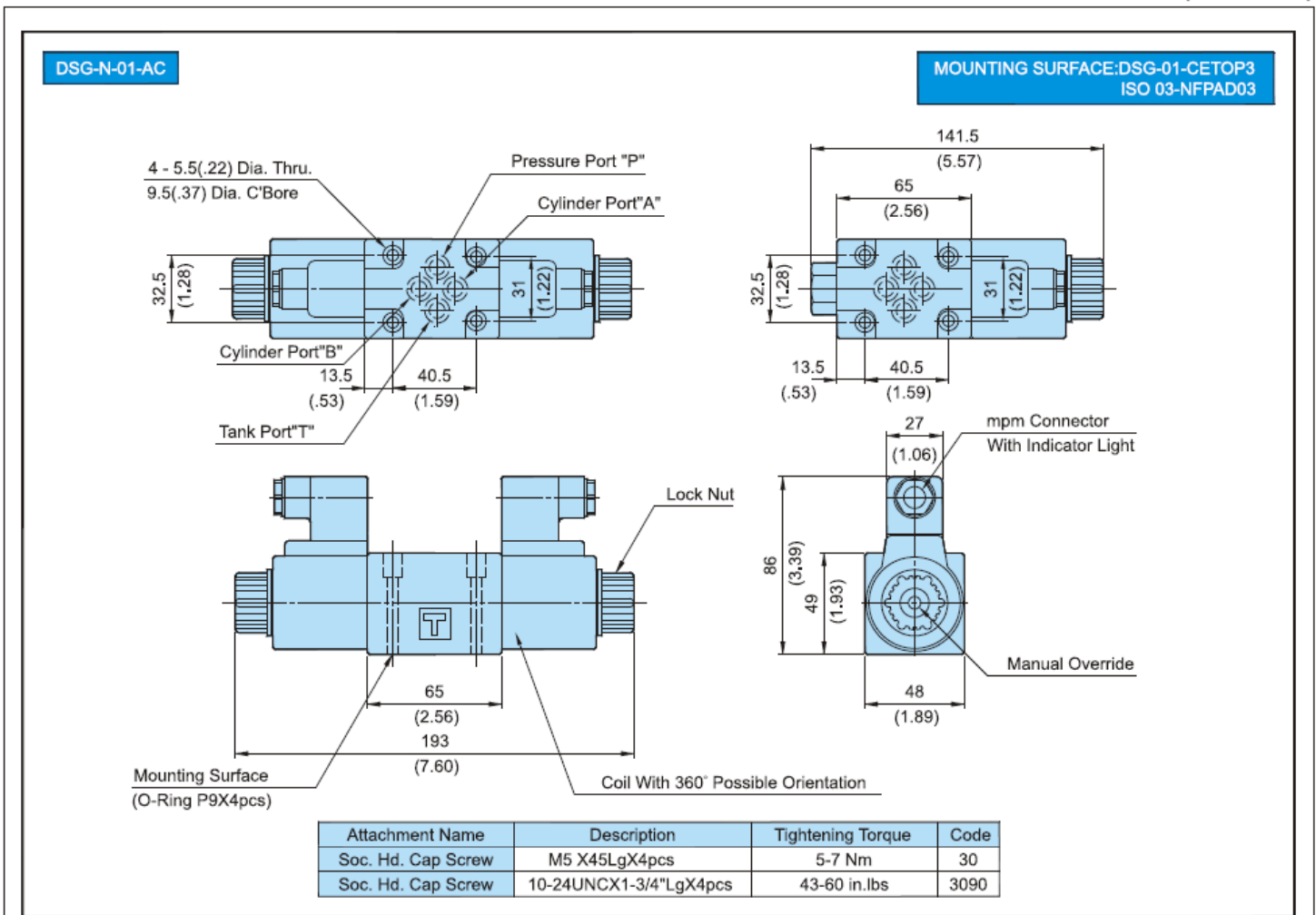
## Additional Date/Spec Sheet

NG6 Single Solenoid Operated Directional Control Valve – AC – Spring Offset 2 Position  
Neutral/Off P→A, B→T | Crossover all Ports Open | Energized/On A→T, P→B



### DIMENSIONS

MILLIMETERS(INCHES)



### VALVES RESPONSE CAPACITY

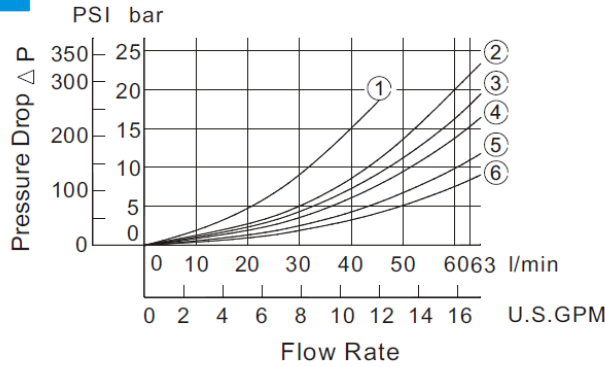
Unit : Times/Second

Model	Working Direction	Spring Centered Type (3C*)	No Spring Type (2D*)	Spring Offset Type (2B*)
DSG-01-AC	Energization Spring back	0.01~0.02	0.01~0.02	0.01~0.02
		0.015~0.05	-----	0.015~0.05

Above response time test condition for DSG-01 is based on 140Bar/2000Psi, 30Lpm/7.9Usqpm

### PRESSURE DROP:

#### DSG-01



Series	Spool Type	Pressure Drop Curve Number				
		P→A	B→T	P→B	A→T	P→T
DSG-01	3C2	⑤	⑤	⑤	⑤	—
	3C3	⑥	⑥	⑥	⑥	④
	3C4	⑤	⑥	⑤	⑥	—
	3C40	⑤	⑤	⑤	⑤	—
	3C60	①	①	①	①	④
	3C9	⑥	⑤	⑥	⑤	—
	3C10	⑤	⑥	⑤	⑥	—
	3C12	⑤	⑤	⑤	⑥	—
	2D2	⑤	②	⑤	②	—
	2B2	②	②	⑤	⑤	—
	2B3	③	③	⑤	⑥	—
	2B8	⑤	—	⑤	—	—

No. of Valve Positions	Spool -Spring Arrangement	Model Numbers & Description	Graphic Symbols	Max. Flow lpm (USgpm)								
							P → A [Port "B" Blocked]			P → B [Port "A" Blocked]		
				80bar (1140PSI)	190bar (2715PSI)	315bar (4500PSI)	80bar (1140PSI)	190bar (2715PSI)	315bar (4500PSI)	80bar (1140PSI)	190bar (2715PSI)	315bar (4500PSI)
2 Position Spring Offset		DSG-2B3-01 P → A, B → T (2 Way)		63(16.6)	63(16.6)	63(16.6)	50(13.2)	50(13.2)	50(13.2)	63(16.6)	63(16.6)	63(16.6)
				63(16.6)	63(16.6)	63(16.6)				63(16.6)	63(16.6)	63(16.6)
				60(15.9)	60(15.9)	60(15.9)				55(14.5)	55(14.5)	55(14.5)

### SOLENOID SPECIFICATIONS

AC/DC CURRENT		AC			
VOLTAGE (V)		AC110V		AC220V	
FREQUENCY (Hz)		50	60	50	60
DSG (01) 1/8"	Starting current (A)	2.38	2.33	1.19	1.17
	Holding current (A)	0.40	0.45	0.20	0.23
	Holding electrical power (W)	-	-	-	-