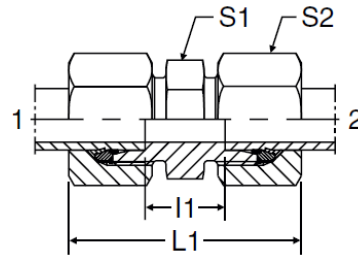


Spec / Additional Data Sheet

G – Metric Male Union Straight

G

Union
24° Flareless / 24° Flareless

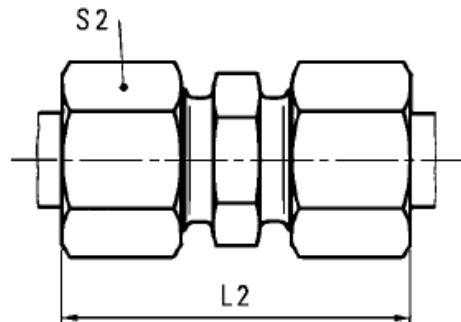


TUBE FITTING PART #	END SIZE		I 1 (mm)	L 1 (mm)	S 1 (mm)	S 2 (mm)
	1 (mm)	2 (mm)				
G04LL	4	4	12	31	9	10
G06LL	6	6	9	32	11	12
G08LL	8	8	12	35	12	14
G10LL	10	10	12	35	14	17
G12LL	12	12	11	35	17	19
G06L	6	6	10	39	12	14
G08L	8	8	11	40	14	17
G10L	10	10	13	42	17	19
G12L	12	12	14	43	19	22
G15L	15	15	16	46	24	27
G18L	18	18	16	48	27	32
G22L	22	22	20	52	32	36
G28L	28	28	21	54	41	41
G35L	35	35	20	63	46	50
G42L	42	42	21	66	55	60
G06S	6	6	16	45	14	17
G08S	8	8	18	47	17	19
G10S	10	10	17	49	19	22
G12S	12	12	19	51	22	24
G14S	14	14	22	57	24	27
G16S	16	16	21	57	27	30
G20S	20	20	23	66	32	36
G25S	25	25	26	74	41	46
G30S	30	30	27	80	46	50
G38S	38	38	29	90	55	60

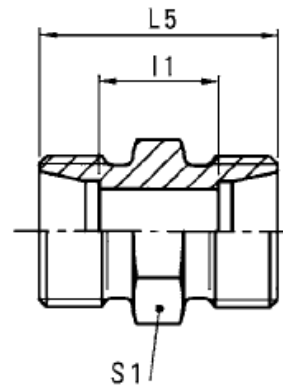
Straight union connector

24°/24°

(A) Top Assembly



(B) Body Only



Series	Bar (psi)	Tube O.D.	(A) Part Number	(B) Part Number	L ₂	L ₅	I ₁	S ₁	S ₂
LL	100 (1450)	4	WAL038557	WAL037844	31	20	12	9	10
		6	WAL038559	WAL037846	32	20	9	11	12
		8	WAL038560	WAL037847	35	23	12	12	14
	500 (7252)	6	WAL373362	WAL037848	39	24	10	12	14
		8	WAL373363	WAL037849	40	25	11	14	17
		10	WAL373364	WAL037850	42	27	13	17	19
L	400 (5801)	12	WAL373365	WAL037851	43	28	14	19	22
		15	WAL373366	WAL037852	46	30	16	24	27
		18	WAL373367	WAL028736	48	31	16	27	32
	250 (3626)	22	WAL373368	WAL028737	52	35	20	32	36
		28	WAL373369	WAL028738	54	36	21	41	41
		35	WAL373370	WAL028739	63	41	20	46	50
		42	WAL373371	WAL028740	66	43	21	55	60
S	800 (11603)	6	WAL373372	WAL037853	45	30	16	14	17
		8	WAL373373	WAL037854	47	32	18	17	19
		10	WAL373374	WAL037855	49	32	17	19	22
	630 (9137)	12	WAL373375	WAL037856	51	34	19	22	24
		16	WAL373377	WAL037858	57	38	21	27	30
	420 (6091)	20	WAL373378	WAL037859	66	44	23	32	36
		25	WAL373379	WAL037860	74	50	26	41	46
		30	WAL373380	WAL037861	80	54	27	46	50
		38	WAL373381	WAL037862	90	61	29	55	60

L₂ = approximate length with nut tightened