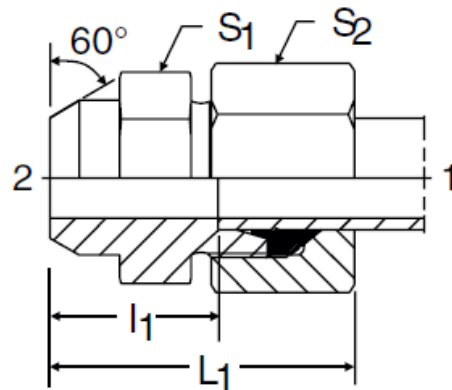


## Spec / Additional Data Sheet

AS – Metric Male Weld-On Tube Adapter

### AS

Weld Connector  
24° Flareless / Butt Weld

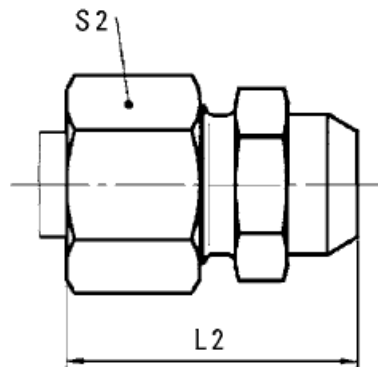


| TUBE<br>FITTING<br>PART # | END SIZE  |          | l1<br>(mm) | L1<br>(mm) | S1<br>(mm) | S2<br>(mm) |
|---------------------------|-----------|----------|------------|------------|------------|------------|
|                           | 1<br>(mm) | 2<br>mm) |            |            |            |            |
| AS06L                     | 6         | 10       | 14.0       | 29         | 12         | 14         |
| AS08L                     | 8         | 12       | 16.0       | 31         | 14         | 17         |
| AS10L                     | 10        | 14       | 18.0       | 33         | 17         | 19         |
| AS12L                     | 12        | 16       | 18.0       | 33         | 19         | 22         |
| AS15L                     | 15        | 19       | 22.0       | 37         | 22         | 27         |
| AS18L                     | 18        | 22       | 23.5       | 40         | 27         | 32         |
| AS22L                     | 22        | 27       | 28.5       | 45         | 32         | 36         |
| AS28L                     | 28        | 32       | 30.5       | 47         | 41         | 41         |
| AS35L                     | 35        | 40       | 32.5       | 54         | 46         | 50         |
| AS42L                     | 42        | 46       | 35.0       | 58         | 55         | 60         |
| AS06S                     | 6         | 11       | 19.0       | 34         | 14         | 17         |
| AS08S                     | 8         | 13       | 21.0       | 36         | 17         | 19         |
| AS10S                     | 10        | 15       | 22.5       | 39         | 19         | 22         |
| AS12S                     | 12        | 17       | 24.5       | 41         | 22         | 24         |
| AS14S                     | 14        | 19       | 27.0       | 45         | 24         | 27         |
| AS16S                     | 16        | 21       | 26.5       | 45         | 27         | 30         |
| AS20S                     | 20        | 26       | 29.5       | 51         | 32         | 36         |
| AS25S                     | 25        | 31       | 32.0       | 56         | 41         | 46         |
| AS30S                     | 30        | 36       | 35.5       | 62         | 46         | 50         |
| AS38S                     | 38        | 44       | 38.0       | 69         | 55         | 60         |

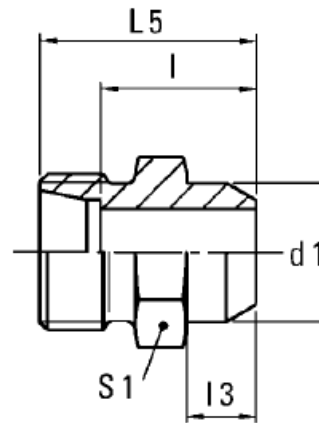
# Weldable stud

## 24°/Weld stud

(A) Top Assembly



(B) Body Only



| Series | Bar (psi)      | Tube O.D. | (A) Part Number        | (B) Part Number        | L <sub>2</sub> | L <sub>5</sub> | l    | l <sub>3</sub> | d <sub>1</sub> | S <sub>1</sub> | S <sub>2</sub> |
|--------|----------------|-----------|------------------------|------------------------|----------------|----------------|------|----------------|----------------|----------------|----------------|
| L      | 500<br>(7252)  | 6         | WAL373491              | WAL037975              | 29             | 21             | 14,0 | 7              | 10             | 12             | 14             |
|        |                | 8         | WAL373492              | WAL037976              | 31             | 23             | 16,0 | 8              | 12             | 14             | 17             |
|        |                | 10        | WAL373493              | WAL037977              | 33             | 25             | 18,0 | 8              | 14             | 17             | 19             |
|        | 400<br>(5801)  | 12        | WAL373494              | WAL037978              | 33             | 25             | 18,0 | 8              | 16             | 19             | 22             |
|        |                | 15        | WAL373495              | WAL037979              | 37             | 29             | 22,0 | 10             | 19             | 22             | 27             |
|        |                | 18        | WAL373496              | WAL037980              | 40             | 31             | 23,5 | 10             | 22             | 27             | 32             |
|        | 250<br>(3626)  | 22        | WAL373497              | WAL037981              | 45             | 36             | 28,5 | 12             | 27             | 32             | 36             |
|        |                | 28        | WAL373498              | WAL037982              | 47             | 38             | 30,5 | 12             | 32             | 41             | 41             |
|        |                | 35        | WAL373499              | WAL037983              | 54             | 43             | 32,5 | 14             | 40             | 46             | 50             |
| 42     |                | WAL373500 | WAL037984              | 58                     | 46             | 35,0           | 16   | 46             | 55             | 60             |                |
| S      | 800<br>(11603) | 6         | WAL373501 <sup>†</sup> | WAL037985 <sup>†</sup> | 34             | 26             | 19,0 | 7              | 11             | 14             | 17             |
|        |                | 8         | WAL373502              | WAL037986              | 36             | 28             | 21,0 | 8              | 13             | 17             | 19             |
|        |                | 10        | WAL373503              | WAL037987              | 39             | 30             | 22,5 | 8              | 15             | 19             | 22             |
|        | 630<br>(9137)  | 12        | WAL373504              | WAL037988              | 41             | 32             | 24,5 | 10             | 17             | 22             | 24             |
|        |                | 16        | WAL373506              | WAL037990              | 45             | 35             | 26,5 | 10             | 21             | 27             | 30             |
|        | 420<br>(6091)  | 20        | WAL373507              | WAL037991              | 51             | 40             | 29,5 | 12             | 26             | 32             | 36             |
|        |                | 25        | WAL373508              | WAL037992              | 56             | 44             | 32,0 | 12             | 31             | 41             | 46             |
|        |                | 30        | WAL373509              | WAL037993              | 62             | 49             | 35,5 | 14             | 36             | 46             | 50             |
|        |                | 38        | WAL373510              | WAL037994              | 69             | 54             | 38,0 | 16             | 44             | 55             | 60             |

L<sub>2</sub> = approximate length with nut tightened  
 Body manufactured in weldable quality steel