

FF6400

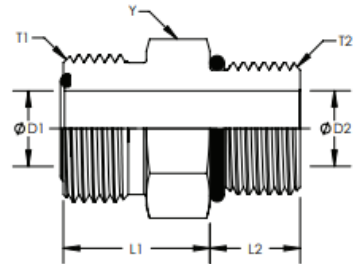
ORFS MALE x SAE MALE - STRAIGHT



Part No.	Size	
	ORFS	SAE
FF6400-04-04	9/16 -18	7/16
FF6400-04-05	9/16 -18	1/2
FF6400-04-06	9/16 -18	9/16
FF6400-04-08	9/16 -18	3/4
FF6400-06-04	1 1/16 -16	7/16
FF6400-06-06	1 1/16 -16	9/16
FF6400-06-08	1 1/16 -16	3/4
FF6400-06-10	1 1/16 -16	7/8
FF6400-08-06	1 3/16 -16	9/16
FF6400-08-08	1 3/16 -16	3/4
FF6400-08-10	1 3/16 -16	7/8
FF6400-08-12	1 3/16 -16	1 1/16
FF6400-10-08	1 -14	3/4
FF6400-10-10	1 -14	7/8
FF6400-10-12	1 -14	1 1/16
FF6400-12-08	1 3/16 -12	3/4
FF6400-12-10	1 3/16 -12	7/8
FF6400-12-12	1 3/16 -12	1 1/16
FF6400-12-16	1 3/16 -12	1 5/16
FF6400-16-12	1 7/16 -12	1 1/16
FF6400-16-16	1 7/16 -12	1 5/16
FF6400-16-20	1 7/16 -12	1 5/8
FF6400-20-20	1 11/16 -12	1 5/8

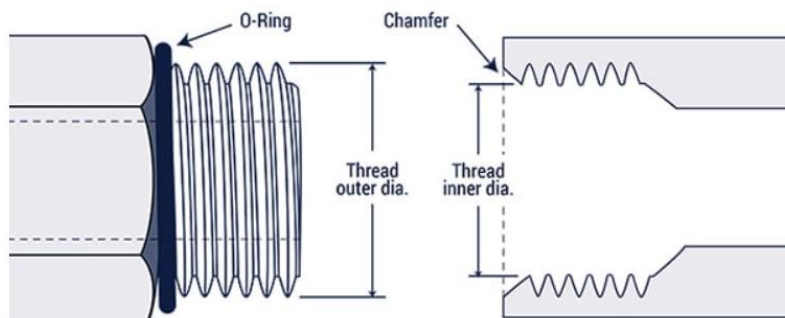
Description: **STUD STRAIGHT**
Part No.: **FS6400**

Parker: **F5OLO**
Weatherhead: **4314**
Aeroquip: **FF1852T**
Gates: **MFFOR-MB**

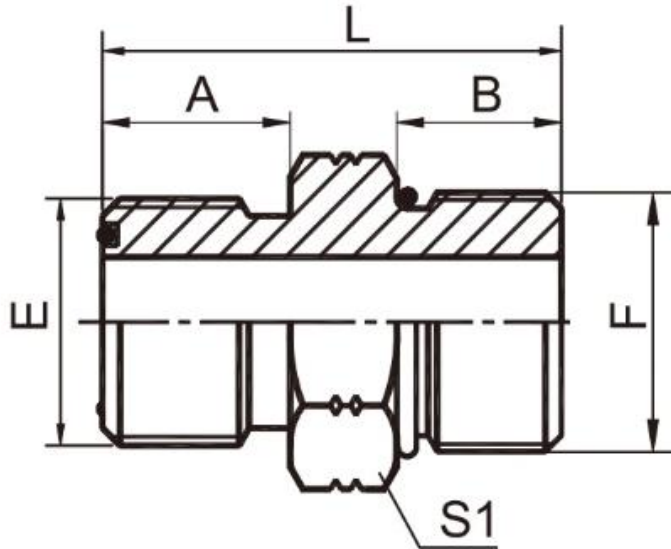


Item #	Y Hex	T1	D1	T2	D2	L1	L2
9-FF6400-4-4	0.625	9/16-18	0.177	7/16-20	0.177	0.709	0.433
9-FF6400-6-4	0.750	11/16-16	0.256	7/16-20	0.177	0.905	0.433
9-FF6400-6-6	0.750	11/16-16	0.256	9/16-18	0.295	0.787	0.472
9-FF6400-6-8	0.875	11/16-16	0.256	3/4-16	0.394	0.807	0.551
9-FF6400-8-6	0.875	13/16-16	0.374	9/16-18	0.295	1.004	0.472
9-FF6400-8-8	0.875	13/16-16	0.374	3/4-16	0.394	0.886	0.551
9-FF6400-10-10	1.063	1-14	0.492	7/8-14	0.492	1.063	0.630
9-FF6400-12-12	1.250	1-3/16-12	0.610	1-1/16-12	0.610	1.191	0.728
9-FF6400-16-16	1.500	1-7/16-12	0.807	1-5/16-12	0.846	1.260	0.728

SAE Straight Thread O-Ring (ORB)



ORFS MALE O-RING SAE O-RING BOSS S-SERIES ISO 11926-2



1FO

代号 PART NO.	螺紋 THREAD		O形圈 O-RING		尺寸 DIMENSIONS			
	E	F	E端	F端	A	B	L	S1
1FO-04	9/16"X18	7/16"X20	O011	O904	9.8	11	28.7	17
1FO-04-05	9/16"X18	1/2"X20	O011	O905	9.8	11	28.7	17
1FO-04-06	9/16"X18	9/16"X18	O011	O906	9.8	12	29.5	17
1FO-04-08	9/16"X18	3/4"X16	O011	O908	9.8	14	33.5	22
1FO-06-04	11/16"X16	7/16"X20	O012	O904	11.2	11	31	19
1FO-06-05	11/16"X16	1/2"X20	O012	O905	11.2	11	30.9	19
1FO-06	11/16"X16	9/16"X18	O012	O906	11.2	12	31.9	19
1FO-06-08	11/16"X16	3/4"X16	O012	O908	11.2	14	35	22
1FO-06-10	11/16"X16	7/8"X14	O012	O910	11.2	16	38.5	27
1FO-08-06	13/16"X16	9/16"X18	O014	O906	12.8	12	34.5	22
1FO-08	13/16"X16	3/4"X16	O014	O908	12.8	14	36.6	22
1FO-08-10	13/16"X16	7/8"X14	O014	O910	12.8	16	40.5	27
1FO-08-12	13/16"X16	1.1/16"X12	O014	O912	12.8	18.5	44.5	32
1FO-10	1"X14	7/8"X14	O016	O910	15.5	16	43.1	27
1FO-10-08	1"X14	3/4"X16	O016	O908	15.5	14	41	27
1FO-10-12	1"X14	1.1/16"X12	O016	O912	15.5	18.5	47	32
1FO-12-10	1.3/16"X12	7/8"X14	O018	O910	17	16	46	32
1FO-12	1.3/16"X12	1.1/16"X12	O018	O912	17	18.5	48.6	32
1FO-12-16	1.3/16"X12	1.5/16"X12	O018	O916	17	18.5	49.8	38
1FO-16-12	1.7/16"X12	1.1/16"X12	O021	O912	17.5	18.5	50	38
1FO-16	1.7/16"X12	1.5/16"X12	O021	O916	17.5	18.5	50.3	38
1FO-16-20	1.7/16"X12	1.5/8"X12	O021	O920	17.5	18.5	52	50
1FO-20-16	1.11/16"X12	1.5/16"X12	O025	O916	17.5	18.5	52	46
1FO-20	1.11/16"X12	1.5/8"X12	O025	O920	17.5	18.5	52.3	50
1FO-24-20	2"X12	1.5/8"X12	O029	O920	17.5	18.5	54	55
1FO-24	2"X12	1.7/8"X12	O029	O924	17.5	18.5	54.1	55