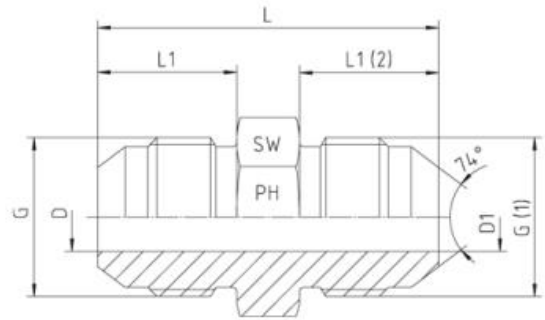


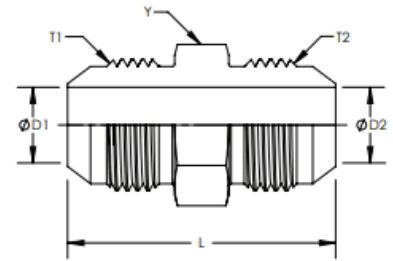
JIC-37° - Adaptors - Straight Unions



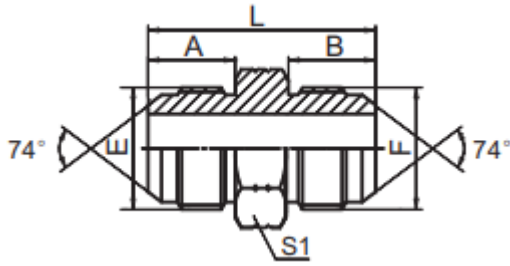
Pressure	Tube O.D.		Thread		Approx. Dimensions						Order-Code	
	PN	mm	in.	G	G1	L	L1	L2	D	D1		SW
350		6	1/4"	7/16"-20 UNF		35,0	14,0		4,5		12	1252510-04-04
350		8	5/16"	1/2"-20 UNF		35,0	14,0		5,0		14	1252510-05-05
350				9/16"-18 UNF	7/16"-20 UNF	35,0	14,1	14,0	7,5	4,0	17	1252510-06-04
350		10	3/8"	9/16"-18 UNF		36,0	14,1		7,5		17	1252510-06-06
350				3/4"-16 UNF	7/16"-20 UNF	38,1	16,7	14,1	9,5	4,5	22	1252510-08-04
350				3/4"-16 UNF	9/16"-18 UNF	38,1	16,7	14,1	9,5	7,5	22	1252510-08-06
350		12	1/2"	3/4"-16 UNF		41,0	16,7		9,5		22	1252510-08-08
350				7/8"-14 UNF	7/16"-20 UNF	41,0	19,3	14,0	12,5	4,5	24	1252510-10-04
350				7/8"-14 UNF	9/16"-18 UNF	41,0	19,3	14,1	12,5	7,5	24	1252510-10-06
350				7/8"-14 UNF	3/4"-16 UNF	45,0	19,3	16,7	12,5	9,5	24	1252510-10-08
350	14, 15, 16		5/8"	7/8"-14 UNF		48,0	19,3		12,5		24	1252510-10-10
350				1 1/16"-12 UN	9/16"-18 UNF				15,0	7,5	27	1252510-12-06
350				1 1/16"-12 UN	3/4"-16 UNF	48,0	21,9	16,7	15,0	9,5	27	1252510-12-08
350				1 1/16"-12 UN	7/8"-14 UNF	51,0	21,9	19,3	15,0	12,5	27	1252510-12-10
350	18, 20		3/4"	1 1/16"-12 UN		55,0	21,9		15,0		27	1252510-12-12
280				1 5/16"-12 UN	1 1/16"-12 UN	56,0	23,1	21,9	21,5	15,0	36	1252510-16-12
280	25		1"	1 5/16"-12 UN		57,0	23,1		21,5		36	1252510-16-16
210				1 5/8"-12 UN	1 1/16"-12 UN	56,0	24,3	21,9	27,5	15,0	46	1252510-20-12
210				1 5/8"-12 UN	1 5/16"-12 UN	57,0	24,3	23,1	27,5	21,5	46	1252510-20-16
210	28, 30, 32		1 1/4"	1 5/8"-12 UN		61,5	24,3		27,5		46	1252510-20-20
210				1 7/8"-12 UN	1 5/8"-12 UN	65,0	27,5	24,3	33,0	27,5	50	1252510-24-20
210	35, 38		1 1/2"	1 7/8"-12 UN		70,0	27,5		33,0		50	1252510-24-24
150		50	2"	2 1/2"-12 UN		80,0	33,9		45,0		65	1252510-32-32

Description: **UNION**
 Part No.: **2403**

Parker: HTX
 Weatherhead: 5305
 Aeroquip: 2027
 Gates: MJ-MJ



Item #	Y Hex	T1	D1	T2	D2	L
9-2403-4-4	0.500	7/16-20	0.172	7/16-20	0.172	1.370
9-2403-6-4	0.625	9/16-18	0.297	7/16-20	0.172	1.400
9-2403-6-6	0.625	9/16-18	0.297	9/16-18	0.297	1.410
9-2403-8-6	0.813	3/4-16	0.391	9/16-18	0.297	1.520
9-2403-8-8	0.813	3/4-16	0.391	3/4-16	0.391	1.620
9-2403-10-8	0.938	7/8-14	0.484	3/4-16	0.391	1.780
9-2403-10-10	0.938	7/8-14	0.484	7/8-14	0.484	1.880
9-2403-12-08	1.125	1-1/16-12	0.609	3/4-16	0.391	1.950
9-2403-12-10	1.125	1-1/16-12	0.609	7/8-14	0.484	2.050
9-2403-12-12	1.125	1-1/16-12	0.609	1-1/16-12	0.609	2.160
9-2403-16-12	1.375	1-5/16-12	0.844	1-1/16-12	0.609	2.200
9-2403-16-16	1.375	1-5/16-12	0.844	1-5/16-12	0.844	2.250
9-2403-20-20	1.688	1-5/8-12	1.078	1-5/8-12	1.078	2.430



1J

代号 PART NO.	螺纹 THREAD		尺寸 DIMENSIONS				
	E	F	A	B	L	S1	
1J-04	7/16"X20	7/16"X20	14	14	34	12	
1J-04-05	7/16"X20	1/2"X20	14	14	34	14	
1J-04-06	7/16"X20	9/16"X18	14	14.1	34.1	17	
1J-04-08	7/16"X20	3/4"X16	14	16.7	38.5	22	
1J-05	1/2"X20	1/2"X20	14	14	34	14	
1J-05-06	1/2"X20	9/16"X18	14	14.1	34	17	
1J-05-08	1/2"X20	3/4"X16	14	16.7	38.5	22	
1J-05-10	1/2"X20	7/8"X14	14	19.3	41	24	
1J-06	9/16"X18	9/16"X18	14.4	14.1	34.2	17	
1J-06-08	9/16"X18	3/4"X16	14.1	16.7	38.5	22	
1J-06-10	9/16"X18	7/8"X14	14.1	19.3	41.5	24	
1J-06-12	9/16"X18	1.1/16"X12	14.1	21.9	46	30	
1J-08	3/4"X16	3/4"X16	16.7	16.7	42	22	
1J-08-10	3/4"X16	7/8"X14	16.7	19.3	44	24	
1J-08-12	3/4"X16	1.1/16"X12	16.7	21.9	48.5	30	
1J-08-16	3/4"X16	1.5/16"X12	16.7	23.1	51	36	
1J-10	7/8"X14	7/8"X14	19.3	19.3	46.5	24	
1J-10-12	7/8"X14	1.1/16"X12	19.3	21.9	51	30	
1J-10-16	7/8"X14	1.5/16"X12	19.3	23.1	53.5	36	
1J-12	1.1/16"X12	1.1/16"X12	21.9	21.9	54	30	
1J-12-14	1.1/16"X12	1.3/16"X12	21.9	22.6	55.5	32	
1J-12-16	1.1/16"X12	1.5/16"X12	21.9	23.1	56	36	
1J-14	1.3/16"X12	1.3/16"X12	22.6	22.6	56	32	
1J-14-16	1.3/16"X12	1.5/16"X12	22.6	23.1	56.5	36	
1J-16	1.5/16"X12	1.5/16"X12	23.1	23.1	57	36	
1J-16-20	1.5/16"X12	1.5/8"X12	23.1	24.3	60.5	46	
1J-16-24	1.5/16"X12	1.7/8"X12	23.1	27.5	65.5	50	
1J-20	1.5/8"X12	1.5/8"X12	24.3	24.3	62	46	
1J-20-24	1.5/8"X12	1.7/8"X12	24.3	27.5	67	50	
1J-20-32	1.5/8"X12	2.1/2"X12	24.3	33.9	75	65	
1J-24	1.7/8"X12	1.7/8"X12	27.5	27.5	70	50	
1J-24-32	1.7/8"X12	2.1/2"X12	27.5	33.9	78.5	65	
1J-32	2.1/2"X12	2.1/2"X12	33.9	33.9	85	65	