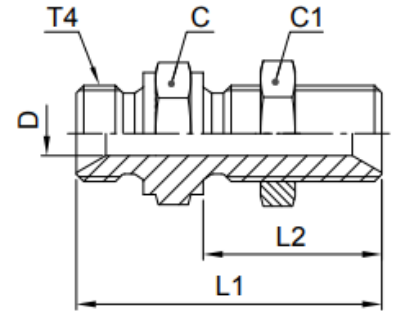


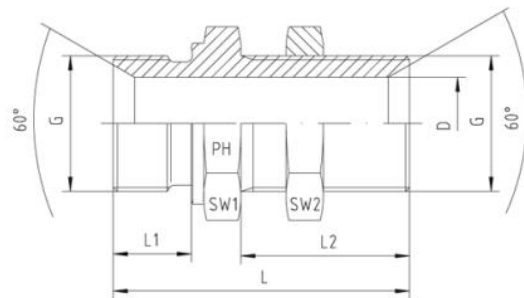
WMK4WL4NM Bulkhead union

BSPP 60° Cone end (ISO 8434-6)

*Supplied with locknut



Thread BSPP T4	L1 mm	L2 mm	C mm	C1 mm	D mm	Weight (steel) g/1 piece	Adapter Steel	Adapter Stainless Steel	PN (bar)	
									S	SS
1/4-19	49	28	19	19	4.7	57	4WMK4WL4NMS	4WMK4WL4NMSS	350	350
3/8-19	55	32	22	22	7.9	84	6WMK4WL4NMS	6WMK4WL4NMSS	350	350
1/2-14	62	35	27	27	11.1	122	8WMK4WL4NMS	8WMK4WL4NMSS	200	200
5/8-14	64	35	30	30	14.3	146	10WMK4WL4NMS	10WMK4WL4NMSS	200	200
3/4-14	67	38	32	36	16.7	209	12WMK4WL4NMS	12WMK4WL4NMSS	200	200
1-11	74	41	41	41	22.2	328	16WMK4WL4NMS	16WMK4WL4NMSS	120	120
1 1/4-11	85	44	50	50	28.6	507	20WMK4WL4NMS	20WMK4WL4NMSS	105	105
1 1/2-11	93	48	55	55	33.3	609	24WMK4WL4NMS	24WMK4WL4NMSS	105	105



BSP Male - BSP Male Both sides with 60°-Cone and Back Nut

Pressure	Thread	Approx. Dimensions							Order-Code
		L	L1	L2	D	SW1	SW2		
400	1/8"-28	42,5	8	28	4,5	14	14	1050511-02	
400	1/4"-19	46,0	11	28	6,0	19	19	1050511-04	
400	3/8"-19	52,0	12	32	8,0	22	22	1050511-06	
400	1/2"-14	59,0	14	35	11,0	27	27	1050511-08	
400	5/8"-14	63,0	16	35	14,5	30	30	1050511-10	
400	3/4"-14	66,0	16	38	16,5	32	32	1050511-12	
400	1"-11	72,0	19	41	22,5	41	41	1050511-16	
200	1 1/4"-11	78,0	20	44	30,5	50	50	1050511-20	
200	1 1/2"-11	84,0	22	48	37,0	55	55	1050511-24	