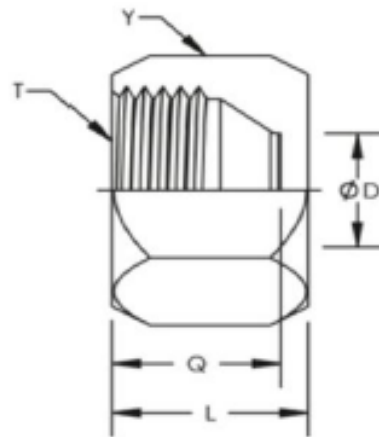


9J

美制 JIC 内螺纹 74° 内锥堵头
JIC FEMALE 74° SEAT PLUG

代号 PART NO.	螺纹 THREAD				尺寸 DIMENSIONS				
	E				A	L	S2		
9J-03	3/8"X24				8	10.5	14		
9J-04	7/16"X20				9	10.5	15		
9J-05	1/2"X20				9.5	11	17		
9J-06	9/16"X18				10.5	11	19		
9J-08	3/4"X16				11	13	24		
9J-10	7/8"X14				13	13.5	27		
9J-12	1.1/16"X12				15	15	32		
9J-14	1.3/16"X12				15	15	36		
9J-16	1.5/16"X12				16	15.5	41		
9J-20	1.5/8"X12				17	18.5	50		
9J-24	1.7/8"X12				20	19	55		
9J-32	2.1/2"X12				23.5	20.5	75		

Dimensional Drawings:



Product ID	Y HEX	T	D	Q	L
SS-304C-02	0.375	5/16-24	0.063	0.438	0.5
SS-304C-03	0.438	3/8-24	0.125	0.5	0.563
SS-304C-04	0.563	7/16-20	0.172	0.531	0.594
SS-304C-05	0.625	1/2-20	0.234	0.547	0.609
SS-304C-06	0.688	9/16-18	0.297	0.563	0.625
SS-304C-08	0.875	3/4-16	0.391	0.625	0.75
SS-304C-10	1	7/8-14	0.484	0.719	0.844
SS-304C-12	1.25	1-1/16-12	0.609	0.781	0.906
SS-304C-14	1.375	1-3/16-12	0.719	0.844	0.969
SS-304C-16	1.5	1-5/16-12	0.844	0.859	1.016
SS-304C-20	2	1-5/8-12	1.078	0.906	1.063
SS-304C-24	2.25	1-7/8-12	1.313	1.031	1.188
SS-304C-32	2.875	2-1/2-12	1.781	1.281	1.438

SAE J514 Pressure Ratings					
Nom. SAE Dash Size	Nom. Tube O.D. Inches	37 Degree Flare Straight Thread	Nom. Pipe Size	SAE St. Threads Union & Bulkhead (PSI)	Fittings With Pipe Threads (PSI)
2	1/8	5/16"-24	1/8"	5000	5000
3	3/16	3/8"-24	1/8"	5000	5000
4	1/4	7/16"-20	1/8"	5000	5000
5	5/16	1/2"-20	1/8"	5000	5000
6	3/8	9/16"-18	1/4"	5000	5000
8	1/2	3/4"-16	3/8"	4500	4000
10	5/8	7/8"-14	1/2"	3500	3000
12	3/4	1 1/16"-12	3/4"	3500	3000
14	7/8	1 3/16"-12	3/4"	3000	2500
16	1	1 5/16"-12	1"	3000	2000
20	1 1/4	1 5/8"-12	1 1/4"	2500	1150
24	1 1/2	1 7/8"-12	1 1/2"	2000	1000
32	2	2 1/2"-12	2"	1500	1000

Note: Since many factors influence the pressure at which a system will or will not perform satisfactory, values shown in this table should not be construed as guaranteed minimum.