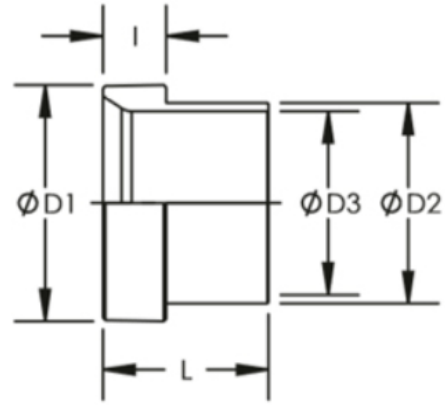


## Dimensional Drawings:



Product ID	D1	D2	D3	I	L
SS-319-02	0.267	0.172	0.13	0.12	0.34
SS-319-03	0.329	0.234	0.193	0.14	0.34
SS-319-04	0.383	0.297	0.255	0.14	0.41
SS-319-05	0.445	0.366	0.318	0.16	0.44
SS-319-06	0.502	0.432	0.38	0.17	0.5
SS-319-08	0.682	0.563	0.505	0.22	0.56
SS-319-10	0.797	0.69	0.631	0.24	0.66
SS-319-12	0.972	0.826	0.756	0.26	0.68
SS-319-14	1.097	0.953	0.881	0.26	0.76
SS-319-16	1.222	1.081	1.006	0.28	0.78
SS-319-20	1.534	1.339	1.26	0.31	0.91
SS-319-24	1.784	1.609	1.51	0.34	1.12

## Pressure Ratings:

SAE J514 Pressure Ratings					
Nom. SAE Dash Size	Nom. Tube O.D. Inches	37 Degree Flare Straight Thread	Nom. Pipe Size	SAE St. Threads Union & Bulkhead (PSI)	Fittings With Pipe Threads (PSI)
2	1/8	5/16"-24	1/8"	5000	5000
3	3/16	3/8"-24	1/8"	5000	5000
4	1/4	7/16"-20	1/8"	5000	5000
5	5/16	1/2"-20	1/8"	5000	5000
6	3/8	9/16"-18	1/4"	5000	5000
8	1/2	3/4"-16	3/8"	4500	4000
10	5/8	7/8"-14	1/2"	3500	3000
12	3/4	1 1/16"-12	3/4"	3500	3000
14	7/8	1 3/16"-12	3/4"	3000	2500
16	1	1 5/16"-12	1"	3000	2000
20	1 1/4	1 5/8"-12	1 1/4"	2500	1150
24	1 1/2	1 7/8"-12	1 1/2"	2000	1000

Note: Since many factors influence the pressure at which a system will or will not perform satisfactory, values shown in this table should not be construed as guaranteed minimum.