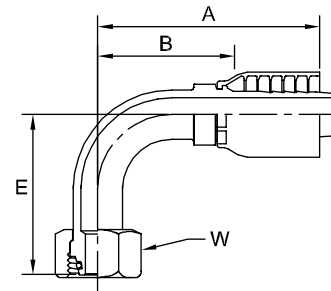


43 Series Fittings

Metric L / Metric S

Use with 301, 301LT, 304, 341, 381, 421, 421HT, 421WC, 424, 431, 436, 451TC, 471, 471ST, 481, 601, 604, and 881 hoses.

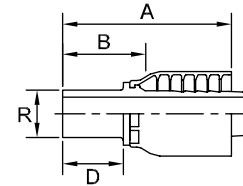
1CF43 Female Metric L - Swivel 90° Elbow (24° Cone with O-Ring)



Note: Mates with EO "L" Series Fittings.

# Part Number	Thread			Hose		A		E		W	B	
	mm			inch		inch	mm	inch	mm	mm	inch	mm
	mm	Thread	mm	inch	mm	inch	mm	inch	mm	mm	inch	mm
1CF43-10-5	10	M16x1,5	-10	5/16	-5	2.30	58	1.16	29	19	1.46	37
1CF43-10-6	10	M16x1,5	-10	3/8	-6	2.56	65	1.38	35	19	1.58	40
1CF43-12-6	12	M18x1,5	-12	3/8	-6	2.40	61	1.22	31	22	1.40	36
1CF43-15-8	15	M22x1,5	-15	1/2	-8	2.95	75	1.65	42	27	1.57	40
1CF43-18-10	18	M26x1,5	-18	5/8	-10	3.17	81	1.77	45	32	1.71	43
1CF43-22-12	22	M30x2	-22	3/4	-12	3.54	90	2.09	53	36	2.00	51
1CF43-35-20	35	M45x2	-35	1-1/4	-20	4.72	120	3.11	79	50	2.87	73

13D43 Male Standpipe Metric S - Rigid Straight



^^ Light Series 11D43-6-4, 11D43-8-4 AND 11D43-12-6 are used in place of their Heavy Series equivalent size and accept the EO Heavy "S" Series ferrules and nuts.

Note: "C" - Stainless Steel Fitting. Must be crimped with Karrykrimp 2, PHastkrimp, Superkrimp, or Parkrimp 2.

# Part Number	R		Hose		A		D		B	
	mm		inch		inch	mm	inch	mm	inch	mm
	mm	mm	inch	mm	inch	mm	inch	mm	inch	mm
11D43-6-4^^	6	-6	1/4	-4	2.03	52	0.87	22	1.28	33
11D43-8-4^^	8	-8	1/4	-4	2.03	52	0.87	22	1.28	33
13D43-10-4	10	-10	1/4	-4	2.13	54	1.02	26	1.26	32
13D43-10-4C+	10	-10	1/4	-4	2.19	56	1.02	26	1.44	37
13D43-12-5	12	-12	5/16	-5	2.52	64	1.02	26	1.61	41
11D43-12-6^^	12	-12	3/8	-6	2.36	60	0.91	23	1.36	35
13D43-12-8C+	12	-12	1/2	-8	2.71	69	1.02	26	1.45	37
13D43-14-6	14	-14	3/8	-6	2.52	64	1.14	29	1.38	35
13D43-16-8	16	-16	1/2	-8	2.68	68	1.18	30	1.42	36
13D43-20-10	20	-20	5/8	-10	3.39	86	1.42	36	1.88	48
13D43-20-12	20	-20	3/4	-12	3.19	81	1.42	36	1.57	40
13D43-20-12C+	20	-20	3/4	-12	3.19	81	1.42	36	1.77	45
13D43-25-12	25	-25	3/4	-12	3.35	85	1.57	40	1.73	44
13D43-30-16	30	-30	1	-16	3.82	97	1.73	44	2.01	51
13D43-38-24+	38	-38	1-1/2	-24	4.05	103	1.97	50	2.42	61

+ Non-standard