

### 43 Series Fittings

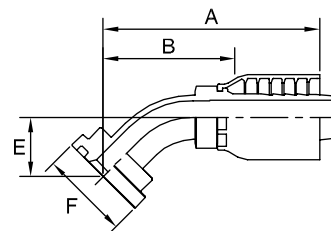
Flange Head

Use with 301, 301LT, 304, 341, 381, 421, 421HT, 421WC, 424, 431, 436, 451TC, 471, 471ST, 481, 601, 604, and 881 hoses.

### 11743 SAE Code 61 Flange Head - 45° Elbow

ISO 12151-3 - E45S - L

(1 Piece: ISO: 12151-3 - E45M - L)



^ Must use Parkrimp 2 or Superkrimp and Die Part No. 83C-A20H.

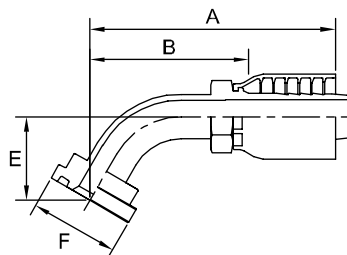
Note: Flange kits and O-Rings listed in Section F.

# Part Number	Flange		Hose		A		E		F		B	
	inch	-	inch	-	inch	mm	inch	mm	inch	inch	mm	
11743-8-6+	1/2	-8	3/8	-6	3.14	80	0.77	20	1-3/16	2.26	57	
11743-8-8	1/2	-8	1/2	-8	3.31	84	0.78	20	1-3/16	2.05	52	
11743-10-8+	5/8	-10	1/2	-8	3.24	82	0.75	19	1-11/32	1.98	50	
11743-10-10	5/8	-10	5/8	-10	4.63	118	0.94	24	1-11/32	3.19	81	
11743-12-8	3/4	-12	1/2	-8	3.33	85	0.84	21	1-1/2	2.08	53	
11743-12-12	3/4	-12	3/4	-12	3.64	92	1.00	25	1-1/2	2.21	56	
11743-16-12	1	-16	3/4	-12	4.12	105	1.00	25	1-3/4	2.60	66	
11743-16-16	1	-16	1	-16	4.10	104	1.06	27	1-3/4	2.51	64	
11743-20-12+	1-1/4	-20	3/4	-12	3.62	92	0.98	25	2	2.18	55	
11743-20-16	1-1/4	-20	1	-16	4.10	104	1.06	27	2	2.51	64	
11743-20-20	1-1/4	-20	1-1/4	-20	4.48	114	1.13	29	2	2.83	72	
11743-20-24	1-1/4	-20	1-1/2	-24	5.41	137	1.38	35	2	4.09	104	
11743-24-20^	1-1/2	-24	1-1/4	-20	5.07	129	1.20	30	2-3/8	3.37	86	
11743-24-24	1-1/2	-24	1-1/2	-24	5.46	139	1.43	36	2-3/8	4.14	105	
11743-24-32+	1-1/2	-24	2	-32	5.96	151	1.43	36	2-3/8	4.18	106	
11743-32-24	2	-32	1-1/2	-24	5.45	138	1.43	36	2-13/16	4.13	105	
11743-32-32	2	-32	2	-32	7.23	184	1.98	50	2-13/16	5.45	138	
11743-40-32+	2-1/2	-40	2	-32	7.29	185	2.03	52	3-5/16	5.51	140	

### 12743 SAE Code 61 Flange Head - 60° Elbow

ISO 12151-3 - E60S - L

(1 Piece: ISO 12151-3 - E60M - L)



Note: Flange kits and O-Rings listed in Section F.

# Part Number	Flange		Hose		A		E		F		B	
	inch	-	inch	-	inch	mm	inch	mm	inch	inch	mm	
12743-12-12	3/4	-12	3/4	-12	4.13	105	1.41	36	1-1/2	2.70	69	
12743-16-12	1	-16	3/4	-12	4.13	105	1.39	35	1-3/4	2.70	69	
12743-16-16	1	-16	1	-16	4.67	119	1.50	38	1-3/4	2.95	75	
12743-20-20	1-1/4	-20	1-1/4	-20	5.06	129	1.69	43	2	3.41	87	
12743-24-24+	1-1/2	-24	1-1/2	-24	5.67	144	1.97	50	2-3/8	4.30	109	

+ Non-standard