

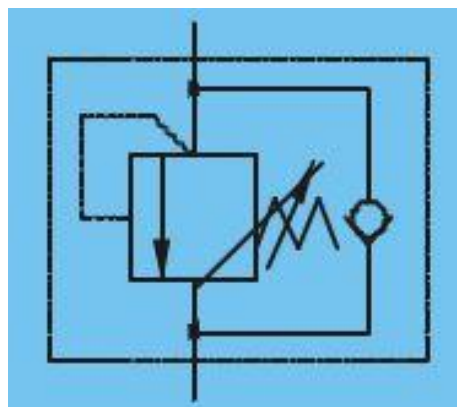
Additional Information

For: Pressure Control Valve 70-140Bar

Application

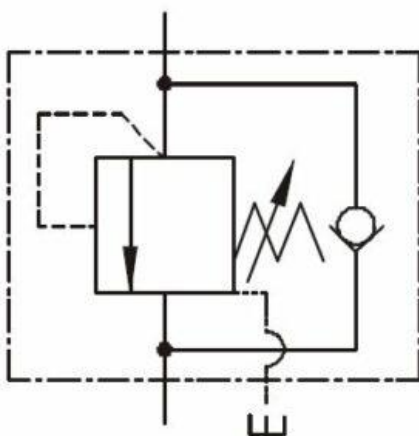
These Valves are used when one cylinder needs to be actuated after a first application has reached its full stroke. (in sequence) While maintaining pressure on first application. In reverse both applications go at the same time.

Symbol Drawing



We supply these Sequence & Check Valves in both the below types

Internal Pilot – External Drain



External Pilot – External Drain

