

Additional Information

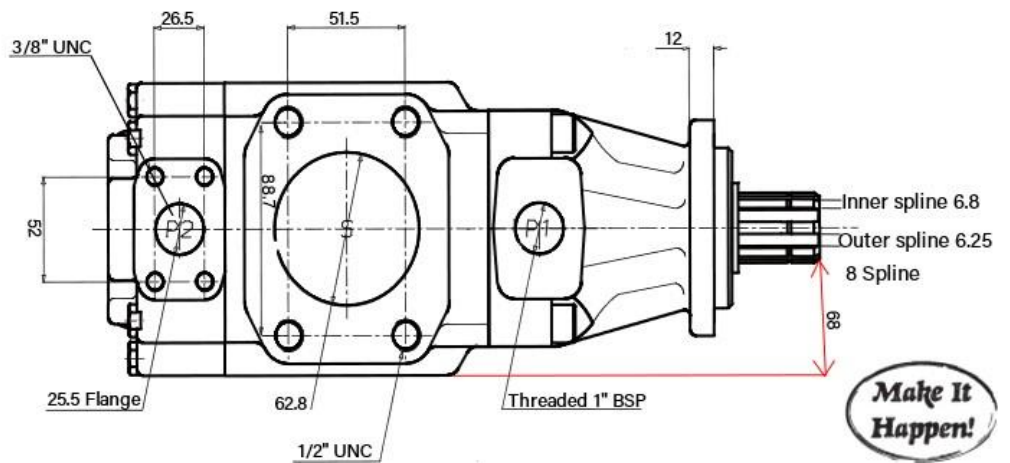
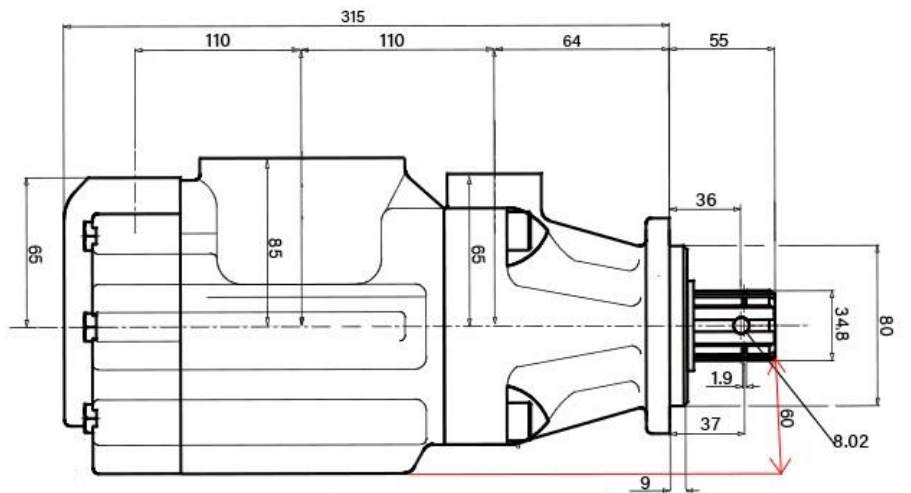
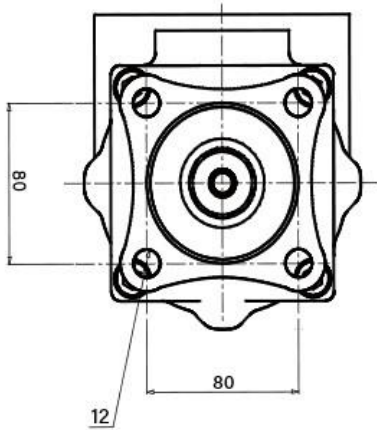
For: Double Vane Pump 70cc plus 70cc

Installation Dimensions

ODF Double Vane Pump

Dimensions in mm

Weight 27.2 kg



General Data

DOUBLE & SINGLE VANE PUMPS

Part Number	Description	CC Per Rev	Max. Pressure [BAR]	Min/Max. Speed [RPM]
VP 70-70 R/L	Double Vane	70+70	240	400-2500
VP 78-34 R/L	Double Vane	78+34	210	400-2500
VP 26 R/L	Single Vane	26	210	400-2500
VP 34 R/L	Single Vane	34	210	400-2500
VP 55 R/L	Single Vane	55	210	400-2500
VP 63 R/L	Single Vane	63	210	400-2500
VP 80 R/L	Single Vane	80	210	400-2500

ODF VANE PUMPS

The design of the ODF vane pumps makes them particularly suitable for applications on trucks, especially vehicles operating with hydraulic motors, like feed bulkers, fuel tankers etc. All the components subject to wear, are contained in a cartridge unit that can easily be removed for inspection and/or replacement without disconnecting the pump from the circuit. This drastically reduces expensive downtime. The vanes ensure a more lamina flow instead of the more turbulent (pulsating) flow from a piston pump, which is perfect for hydraulic motors, resulting in extending the life and increasing efficiency.

The special design of the double-lip vanes renders the ODF vane pumps ideally suitable for applications that require high pressure levels and very low noise emissions. Furthermore, the two opposed pumping chambers formed by the elliptical profile of the cam, cancel out radial loads which dramatically reduces

vibrations and increases the pump's lifespan considerably. In addition to reliability, the ODF pump guarantees continuous high volumetric efficiency during its whole service time. This diminishes the requirement to compensate for the typical efficiency loss of other kinds of pumps, that increases the truck engine RPM, which in turn causes increased fuel consumption, air pollution, fuel cost and engine wear etc. Such characteristics, along with an extremely low noise-level, make ODF pumps environmentally friendly in line with the latest ecological trend. The pumps are extremely compact and are supplied with different types of either ISO or UNI norm mountings, for direct coupling with PTO and SAE norm hydraulic fittings. This, together with the ability to orientate the inlet and outlet ports, make ODF pumps very easy to install and guarantees their interchangeability with other types of pumps.