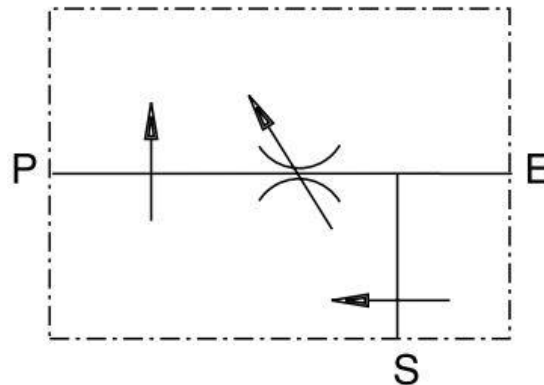


## Additional Information

### For: Aluminium 3/4" Priority Flow Divider

#### Symbol Drawing



#### Application

This valve is used to adjust and keep the flow rate constant. Also in case of pressure variations. In addition they convey the excess flow to the second port. Lastly the second port is not influenced by any pressure variations either.

#### Installation

You should connect the inlet flow to port E and the actuator to port P. It is very important that the flow rate of the actuator stays constant. Port S can be connected to either a second actuator or to the tank.

#### Operation

- The oil goes in through port E and goes out from port P, at the pre-set flow rate.
- The excess flow - which is not influenced by any pressure variations - goes out from port S and can be either used for another actuator or released to the tank.
- To adjust the flow rate of port P, loosen the hand knob 1.
- Then screw hand knob 2 to increase the flow rate or loosen it to reduce it.