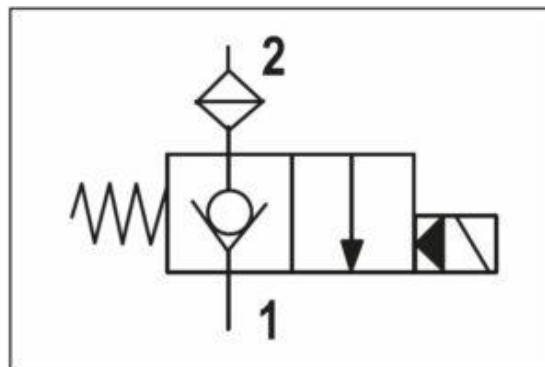


## Additional Information

### For: B28 N/C Single Poppet Cartridge M/O

#### Symbol Drawing



#### General Information:

Single Poppet type valve is normally closed (N/C) from side port 1 inlet, to bottom port 2 outlet, until energized, then opens.

Free passage from 2 to 1 with energized coil or from 1 to 2 with de-energized coil.

Cartridge: CRP04

The Pilot-operated electric 2 way 2 position directional valve is controlled electrically.

The tapered poppet is in tempered and ground steel.

N/C valve sleeve is in galvanized steel