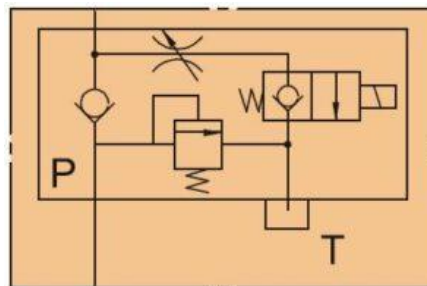


## Additional Information

### For: Line Mounting Lift Valve DC24V

#### Symbol Drawing



#### Operation

If the pump is on, the cylinder will lift until the cylinder bottoms out, then the relief blows. When the pump is off, the cylinder stays locked in position. In order to lower, energize the coil (or turn out the Emergency screw) and adjust the lowering speed with the flow control.