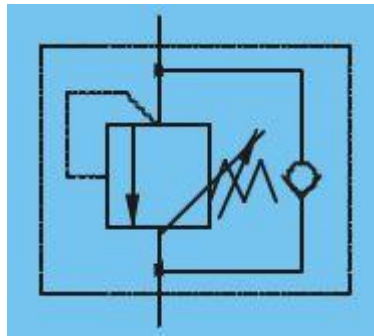


Additional Information

For: Pressure Control Valve 3/4" 70-140Bar

Symbol Drawing

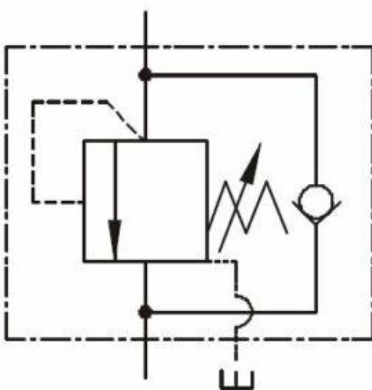


Application

These Valves are used when one cylinder needs to be actuated after a first application has reached its full stroke. (in sequence) While maintaining pressure on first application. In reverse both applications go at the same time.

We supply these Sequence and Check Valves in both the below types

Internal Pilot - External Drain



External Pilot - External Drain

