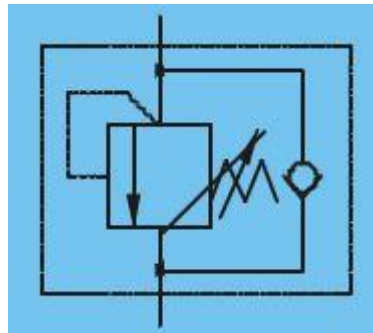


## Additional Information

### For: Pressure Control Valve 3/8" 140-210Bar

#### Symbol Drawing

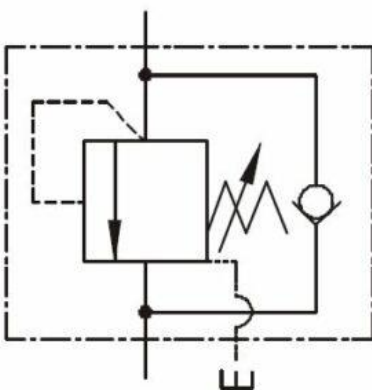


#### Application

These Valves are used when one cylinder needs to be actuated after a first application has reached its full stroke. (in sequence) While maintaining pressure on first application. In reverse both applications go at the same time.

### We supply these Sequence and Check Valves in both the below types

#### Internal Pilot - External Drain



#### External Pilot - External Drain

