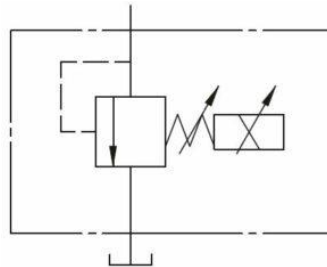


## Additional Information

### For: Electro Proportional Pilot Relief 206Bar

#### Symbol Drawing



#### Application

- These valves consequently offer a simplified piping system. As a result of using only one remote electrically operated pilot relief valve. For multiple functions, while each requiring different pressure settings.
- These Valves furthermore offer step-less pressure control proportional to the input current. Additionally 24V DC control as well as 0-10 volts reference single.
- These valves offer good response with the executor therefore reducing resonance.
- Equally important, it is recommended using the Standard HystAR electronic controller, specifically type HNC in order to acquire the best results.

#### Operating Data

### EDG01 Operating Data

#### Position For Installation:

To install the pilot valve correctly mount with "bleed" up-wards in order to eliminate air and reduce the risk of air entrapment when used in conjunction with another main proportional valve. For a steady control pressure ensure that the pilot pressure pipe hoses does not exceed 30 cm.

#### Elimination Of Air(Air Vent)

Set the pilot control pressure to 29.4bar(420PSI) and open the bleed screw to eliminate the air. Lock the bleed screw when all air bubbles have been eliminated.

#### Manual Over-Ride

It is possible to set the control pressure manually for commissioning and trouble shooting purposes.

#### Drain

Ensure that the return oil is piped back to tank directly and below the oil level.