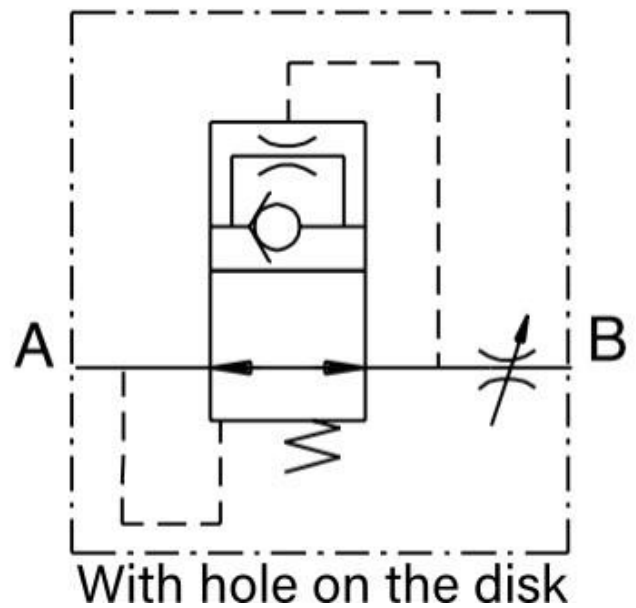
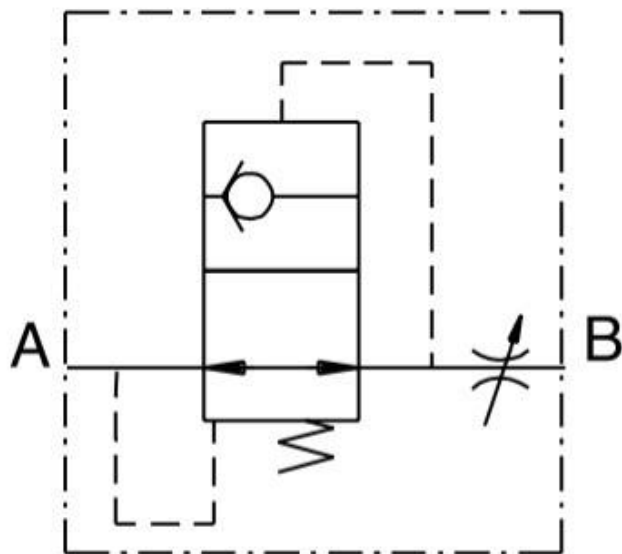


Additional Information

For: Hose Burst Valve Inserts

Symbol Drawing



Application

The flow of this valve is free in both directions under normal working conditions. In the case of a sudden increase of flow from the B port to A port, the valve immediately stops the flow. Furthermore a little calibrated orifice can be made on the disk. Allowing after the valve has closed for the orifice to determine the descent flow.