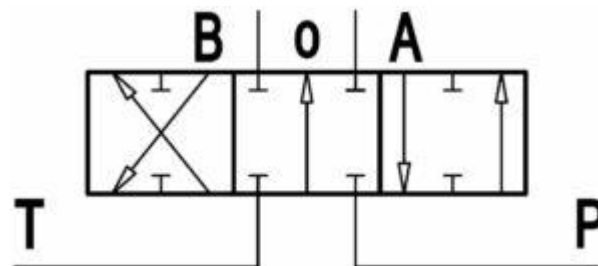


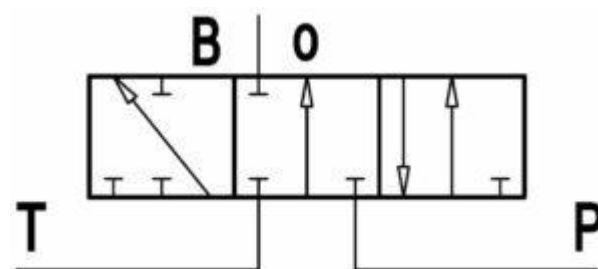
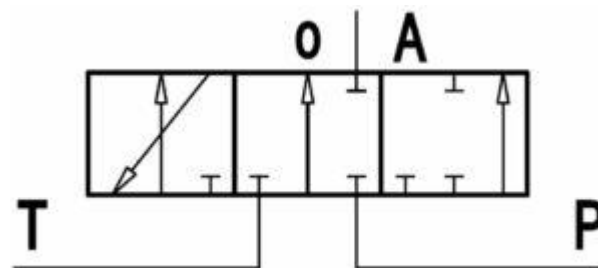
## Additional Information

### For: M45 Double Acting Cylinder Spool only

#### Symbol Drawing



Single Acting also available on request. Either of the below options ↓



#### Application

When the spool is operated, it intercepts the switch gallery by diverting the flow of oil to service port A or B. Furthermore if two or more spools are actuated at the same time, the oil will power the service port that has the lower load. Subsequently selecting the path with the least resistance. In addition by throttling the spools, the flow of oil can be divided between two or more service ports.