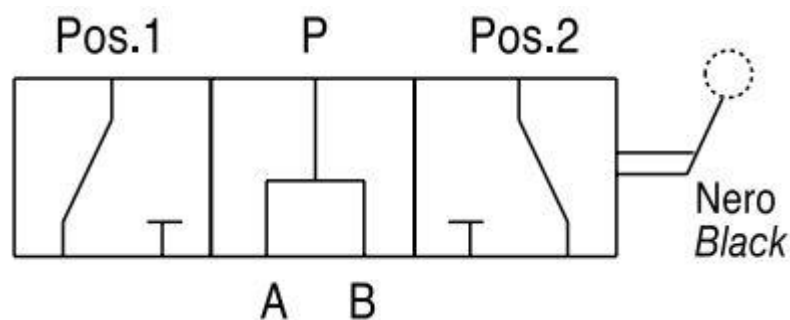


Additional Information

For: 3-Way Flow Diverter Valves

Symbol Drawing



Application/Installation/Operation

Application: Flow dividers connect or they block off the inlet flow towards 2 ports. This special hydraulic scheme is able to then control a single action actuator.

Installation: The P port is connected to the inlet flow and then A & B are the actuator ports.

Operation: If the hand lever is in position 1, it allows the flow towards the A port. If the hand lever is in position 2 it will allow the flow towards the B port. The A type valves which are Open Centre valves allow all ports to be connected when the hand lever is in the mid position.