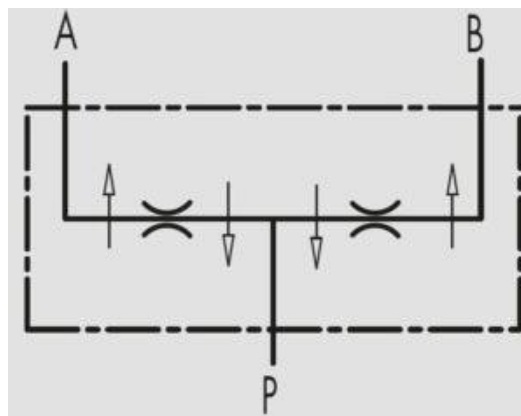


## Additional Information

### For: Steel 50/50 Flow Divider Valve

#### Symbol and Simple Drawing



#### Use and Operation

These valves allow the division of inlet flow into two equal parts - 50/50. They unify it in the reverse direction irrespective of any pressure differences and flow. They are used when two equal actuators, that are not mechanically coupled, supplied by the same pump and controlled by a single distributor. Must move simultaneously both at input and output.

Connect P port to the pressure flow. A & B port to the actuators.

#### **Tightness:** by diameter combination

Minor leakage Cylinder stroke error tolerance of +/- 3%. Any synchronization differences are compensated by the terminal position of the stroke.