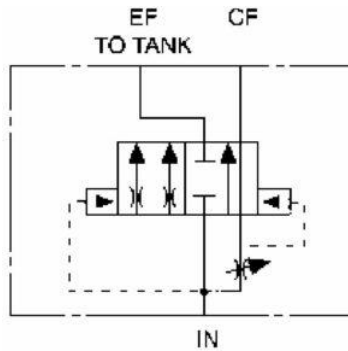


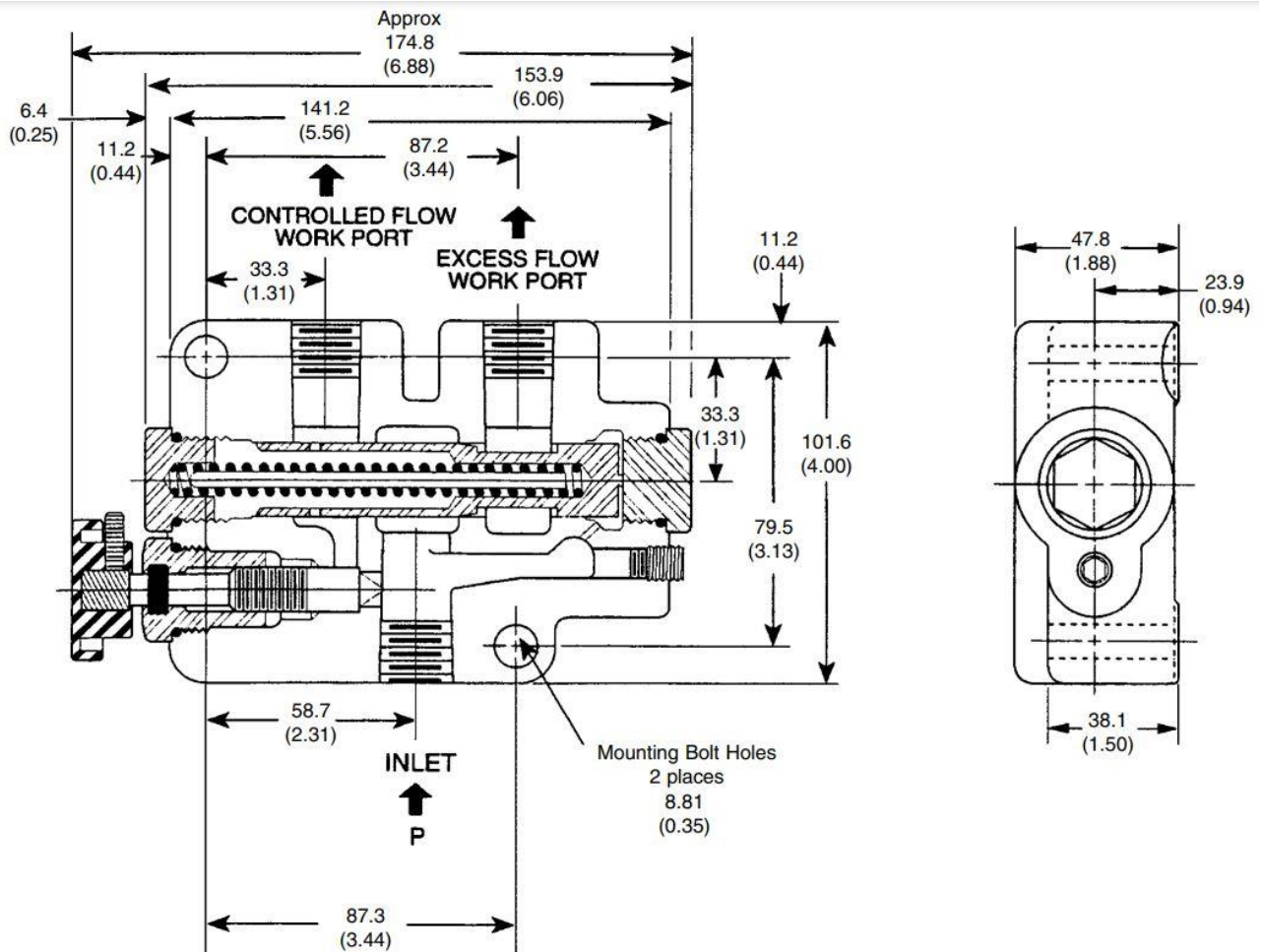
Additional Information

For: CFDA-50 Priority Flow Divider

Symbol Drawing



Installation Dimensions



Description

The CFDA Series flow controls offer a dependable means of obtaining flow adjustment of up to 56.25Lpm. It also provides easy manual control where frequent flow changes are required. Furthermore the pressure compensated provides a smooth and constant output flow regardless of the pressure changes at the controlled flow port.

Operation

The flow enters the valve through the inlet port. Then by rotating the adjustable knob varies the flow from the controlled flow port. When the controlled flow demand is satisfied, the balance of the inlet flow passes through the excess flow port and then returns to the tank. Additionally the excess flow port is not a work port and must not be pressurized. To emphasize - the flow through the controlled port can be reversed, however then it is not pressure compensated.

Simple Drawing

